



2012

**SPARE PART
MANUAL
&
PRICE LIST**

INDEX

CRANKSET

| | |
|-----------------------------------|--------|
| CU2-M27 BSA 68-73mm | Page 3 |
| CU2-M27 BB30 68-73mm | Page 4 |
| CU2-M18NS BSA 68-73mm | Page 5 |
| CU2-M18NS BB30 68-73mm | Page 6 |
| CU2-M18NS Press-Fit / BB30 84,5mm | Page 7 |
| CU2-M18NS Press-Fit 30-73mm | Page 8 |

FRONT HUB

| | |
|--------------------|---------|
| URANO (MTB) ** | Page 9 |
| URANO Lefty (MTB) | Page 10 |
| URANO QR20 (MTB) * | Page 11 |
| ARIEL | Page 12 |

REAR HUB

| | |
|----------------|---------|
| URANO (MTB) ** | Page 13 |
| ARIEL | Page 14 |

QUICK RELEASE

| | |
|--|---------|
| SK10-R Team SK10-M Team SK10-Pro TASK Team ** | Page 15 |
|--|---------|

HEADSET

| | |
|---|---------|
| D-SET (1 1/8" External cups) | Page 16 |
| D-SET ZS (1 1/8" Zero Stack) | Page 17 |
| D-SET 1,5" Taper ZS/IS ** (former E2-Set) | Page 18 |
| D-SET 1,5" Taper 49 and 44 ** | Page 19 |
| D-SET 1,5" TAPER ZS * | Page 20 |

STEM

| | |
|-------------------|---------|
| WEB-STEM 6B Ti. * | Page 21 |
|-------------------|---------|

DISC BRAKE

| | |
|---------------------------|---------|
| DBR Caliper * | Page 22 |
| DBR Brake Pump * | Page 23 |
| DBR Brake hose & fittings | Page 24 |

SEATPOST & SEATCOLLAR

| | |
|----------------------------|---------|
| ST-R11 Ti. 31,6 x 250 | |
| ST-M11 Ti. 31,6 x 370 | |
| ST-M11 Ti. 30,9 x 370 | |
| ST-M11 XL Ti. 30,9 x 420 * | Page 25 |
| ST-11E Ti. - ST-11E | Page 26 |
| ST-M10 Ti. 27,2 x 350 * | |
| ST-M10 Ti. 30,9 x 350 | |
| ST-M10 Ti. 31,6 x 350 | |
| ST-M10 XL Ti. 30,9 x 400 | |
| ST-M10 XL Ti. 31,6 x 400 | Page 27 |
| ST-R & M Black Hole | Page 28 |

SUSPENSION FORK

| | |
|---------------------------|---------|
| AIR-WAY SUPER RACE 26" * | |
| AIR-WAY XC TEAM 26" * | Page 29 |
| AIR-WAY SUPER RACE 29er * | |
| AIR-WAY XC TEAM 29er * | Page 30 |

SUSPENDED FRAME

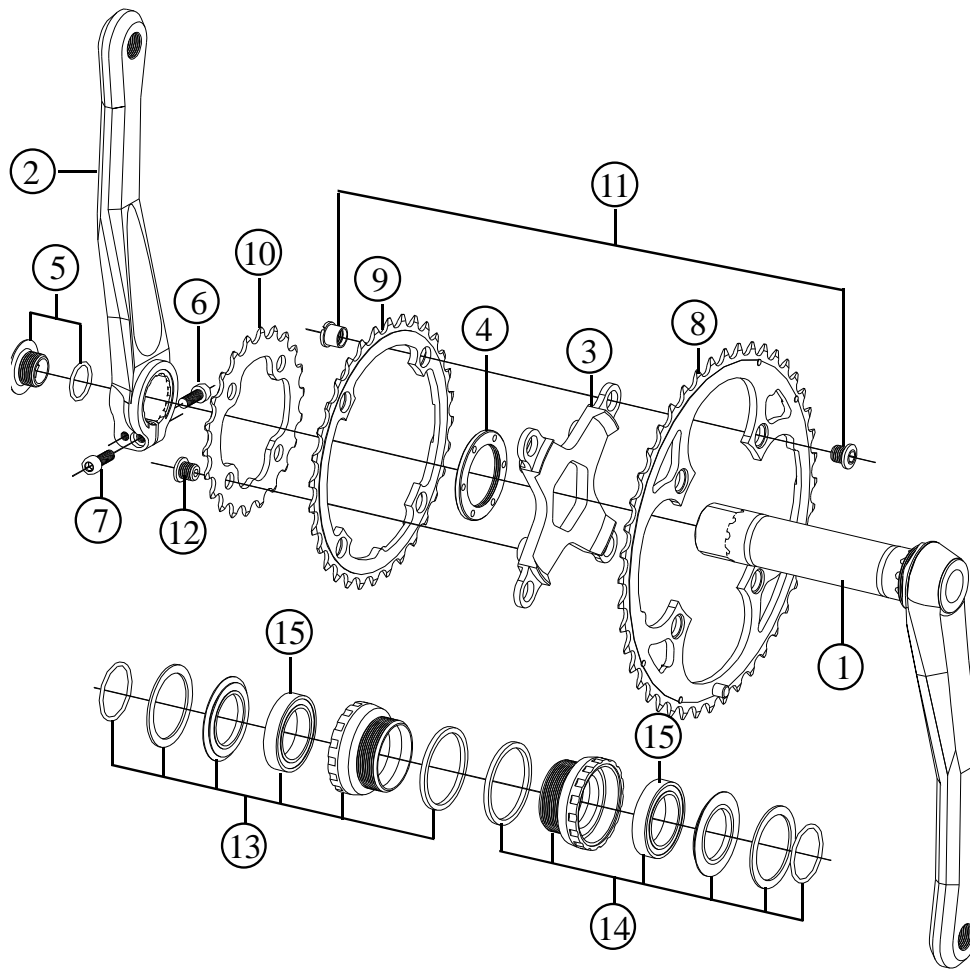
| | |
|-----------------|---------|
| 8HP FULL 29er * | Page 31 |
|-----------------|---------|

* **NEW PRODUCT 2012**

** **MODIFIED PRODUCT**

Front Crankset for MTB
CU2-M27 - BSA 68-73mm BB shell

2012

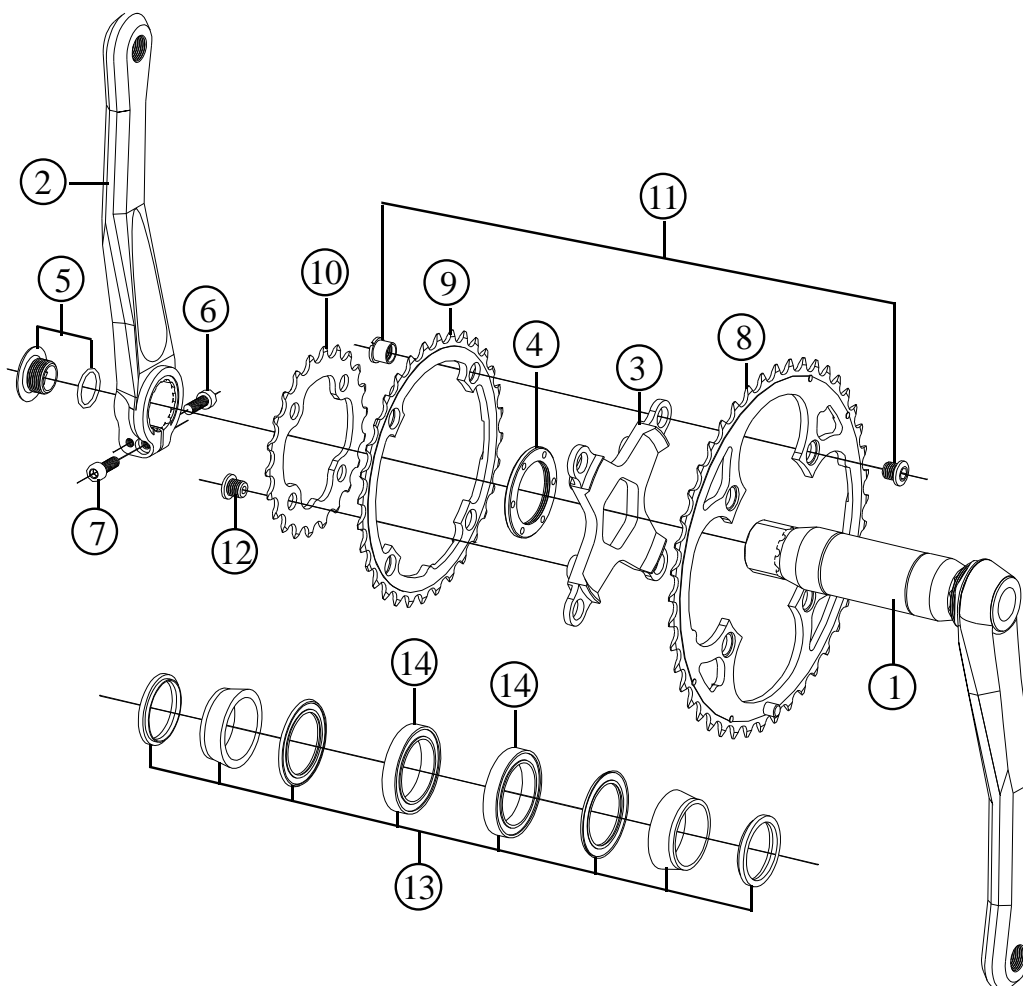


| Item no. | Code | DESCRIPTION | Price € |
|----------|-----------|---|---------------------------|
| 1 | CU23R | Integral Right Arm with 25mm Axle. High Q-Factor. 170-172,5-175 mm - Black | 170,0 |
| 2 | CU24L | Clamp Type Left Arm. High Q-Factor. 170-172,5-175 mm - Black | 115,0 |
| 3 | CU25M | 4 Arm Spider for triple rings (110/64 mm B.C.D.) Black | 80,0 |
| 4 | CU006 | Spider Lock Ring | 6,0 |
| 5 | CU18R | Bolt for Play Adjustment. Black, Red, Titan, Blue, Orange. O-Ring 2056 (I.D. 14 x 1,78mm) | 6,0 |
| 6 | TCC515TI | Allen Bolt M5 x 15 / Titanium - Gold Plated | 6,3 |
| 7 | TCC512TI | Allen bolt M5 x 12 / Titanium - Gold Plated | 6,1 |
| 8 | CU1844O | Chain Ring FRM Pro 44T (104 mm B.C.D.) | 55,0 |
| 8 | CU1842O | Chain Ring FRM Pro 42T (104 mm B.C.D.) | 55,0 |
| 9 | CU1832M | Chain Ring FRM Pro 32T (104 mm B.C.D.) | 32,0 |
| 10 | CU2122I | Chain Ring FRM Pro 22T (64 mm B.C.D.) | 19,0 |
| 11 | CU004G | Chainring Fixing Bolt & Nut Black, Red, Titan, Blue, Orange | Kit of 4 sets 17,0 kit |
| 12 | CU005 | Inner Gear Fixing Bolt Unit | Set of 4pcs 8,0 kit |
| 13 | | Left side (clockwise thread) BB assembly with bearing, shield, spacer and O-Ring | 35,5 kit |
| 14 | | Right side (counterclockwise thread) BB assembly with bearing, shield, spacer and O-Ring | 35,5 kit |
| 15 | BB37257RS | Bearing NACHI 6805 2RS 37x 25x 7mm (double seal) | 2pcs 17,7 pc |
| | CU26 | Tool for Bottom Bracket Cups | 18,0 |
| | NSTOOL25 | Tool to disassemble the Lock Ring – Axle 25mm | 19,0 |
| | | | |
| | | | |

Specifications are subject to change without notice

Front Crankset for MTB
CU2-M27 - BB30 68-73mm

2012



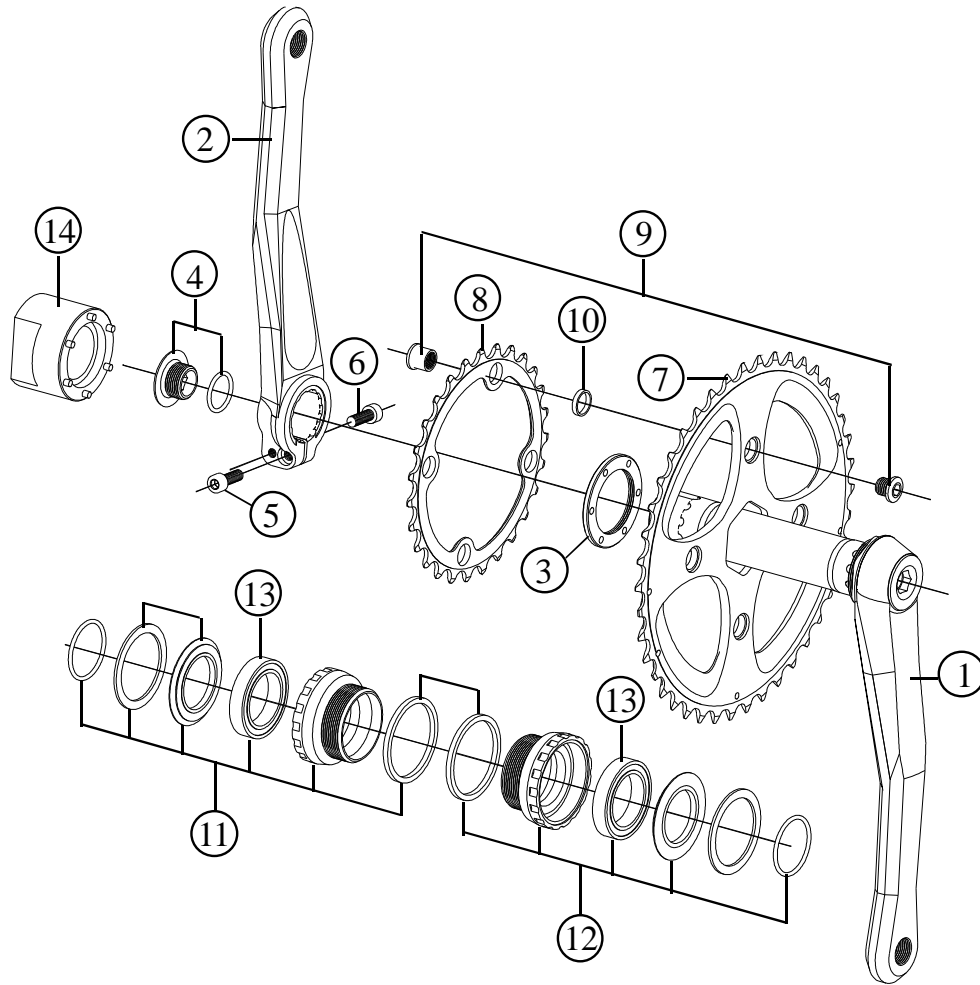
| Item no. | Code | DESCRIPTION | Price € |
|----------|-----------|---|---------------------------|
| 1 | CUB323R | Integral Right Arm with 30mm Axle. High Q-Factor. 170-172,5-175 mm - Black | 190,0 |
| 2 | CU24L | Clamp Type Left Arm. High Q-Factor. 170-172,5-175 mm - Black | 115,0 |
| 3 | CU25M | 4 Arm Spider for triple rings (110/64 mm B.C.D.) Black | 80,0 |
| 4 | CU006 | Spider Lock Ring | 6,0 |
| 5 | CU18R | Bolt for Play Adjustment. Black, Red, Titan, Blue, Orange. O-Ring 2056 (I.D. 14 x 1,78mm) | 6,0 |
| 6 | TCC515TI | Allen Bolt M5 x 15 / Titanium - Gold Plated | 6,3 |
| 7 | TCC512TI | Allen bolt M5 x 12 / Titanium - Gold Plated | 6,1 |
| 8 | CU1844O | Chain Ring FRM Pro 44T (104 mm B.C.D.) | 55,0 |
| 8 | CU1842O | Chain Ring FRM Pro 42T (104 mm B.C.D.) | 55,0 |
| 9 | CU1832M | Chain Ring FRM Pro 32T (104 mm B.C.D.) | 32,0 |
| 10 | CU2122I | Chain Ring FRM Pro 22T (64 mm B.C.D.) | 19,0 |
| 11 | CU004G | Chainring Fixing Bolt & Nut Black, Red, Titan, Blue, Orange | Kit of 4 sets 17,0 kit |
| 12 | CU005 | Inner Gear Fixing Bolt Unit | Set of 4pcs 8,0 kit |
| 13 | | BB30 Assembly with bearings, lip seals and spacers | 30,0 kit |
| 14 | BB42307RS | Bearing Enduro 61806 42x 30x 7mm | 2pcs 12,9 pc |
| | NSTOOL30 | Tool to disassemble the Lock Ring – Axle 30mm | 19,0 |
| | | | |
| | | | |

Specifications are subject to change without notice

Front Crankset for MTB

CU2-M18NS – BSA 68-73mm BB shell

2012

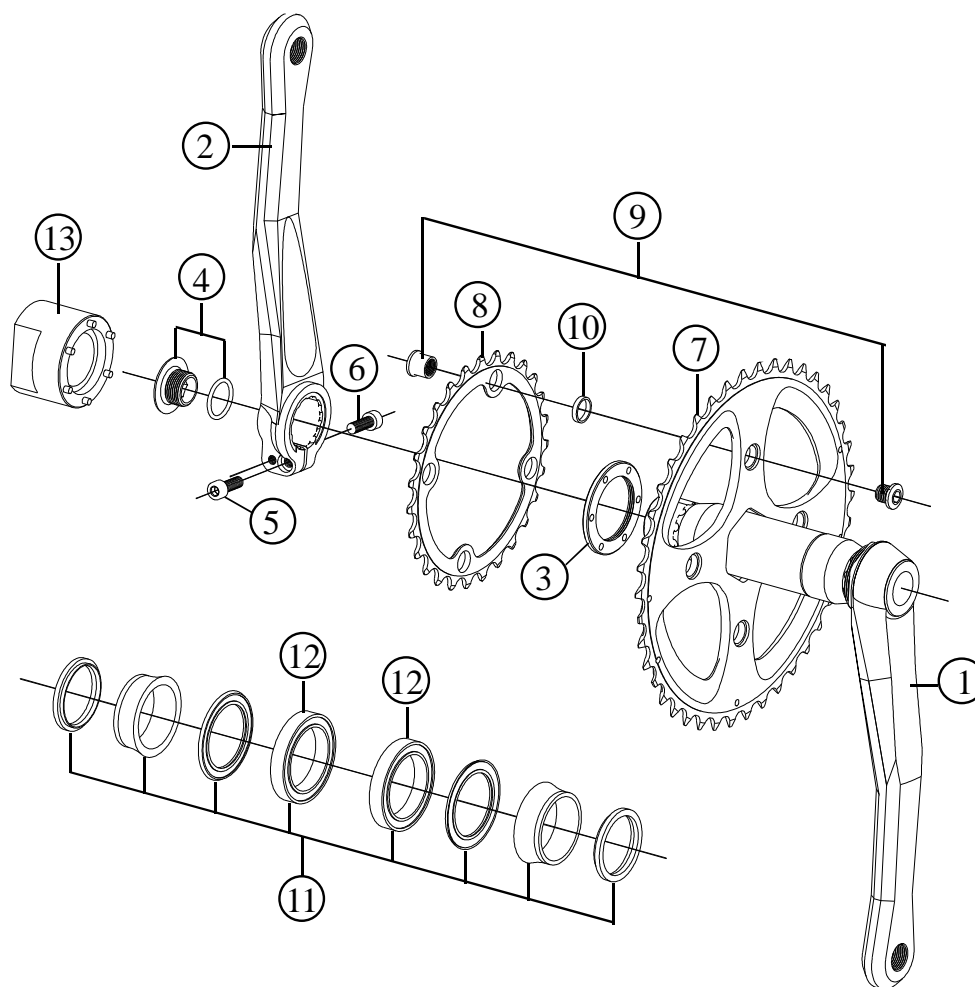


| Item no. | Code | DESCRIPTION | Price € |
|----------|-----------|---|---------------|
| 1 | CU23R | Integral Right Arm with 25mm Axle High Q-Factor 170-172,5-175 mm – Black | 170,0 |
| 1 | CU23RLQ | Integral Right Arm with 25mm Axle. Low Q-Factor 170-175 mm - Black | 170,0 |
| 2 | CU24L | Clamp Type Left Arm. High Q-Factor 170-172,5-175 mm - Black | 115,0 |
| 2 | CU24LLQ | Clamp Type Left Arm. Low Q-Factor 170-175 mm - Black | 115,0 |
| 3 | CU006 | Lock Ring | 6,0 |
| 4 | CU18R | Bolt for Play Adjustment. Black, Red, Titan, Blue, Orange. O-Ring 2056 (I.D. 14 x 1,78mm) | 6,0 |
| 5 | TCC515TI | Allen Bolt M5 x 15 / Titanium - Gold Plated | 6,3 |
| 6 | TCC512TI | Allen bolt M5 x 12 / Titanium - Gold Plated | 6,1 |
| 7 | CU42NS | Chain Ring NS 42T BCD 85mm Black anodised | 76,0 |
| 7 | CU40NS | Chain Ring NS 40T BCD 85mm Black anodised | 76,0 |
| 7 | CU38NS | Chain Ring NS 38T BCD 64mm Black anodised | 76,0 |
| 7 | CU36NS | Chain Ring NS 36T BCD 64mm Black anodised | 68,0 |
| 8 | CU27NS | Chain Ring NS 27T BCD 85mm (compat. 40/42NS rings only) Black anodised | 29,0 |
| 8 | CU24NS | Chain Ring NS 24T BCD 64mm (compat. 38NS ring only) Black anodised | 29,0 |
| 8 | CU22NS | Chain Ring NS 22T BCD 64mm (compat. 36NS ring only) Black anodised | 21,0 |
| 9 | CU004G | Chainring Fixing Bolt & Nut Black, Red, Titan, Blue, Orange | Kit of 4 sets |
| 10 | CU004S | Chainring Spacer NS – Light Alloy | Set of 4 pcs |
| 11 | | Left side (clockwise thread) BB assembly with bearing, shield, spacer and O-Ring | 35,5 kit |
| 12 | | Right side (counterclockwise thread) BB assembly with bearing, shield, spacer and O-Ring | 35,5 kit |
| 13 | BB37257RS | Bearing NACHI 6805 2RS 37x 25x 7mm (double seal) | 2pcs |
| 14 | NSTOOL25 | Tool to disassemble the Lock Ring – Axle 25mm | 19,0 |
| | CU26 | Tool for Bottom Bracket Cups | 18,0 |

Specifications are subject to change without notice

Front Crankset for MTB
CU2-M18NS - BB30 68-73mm

2012

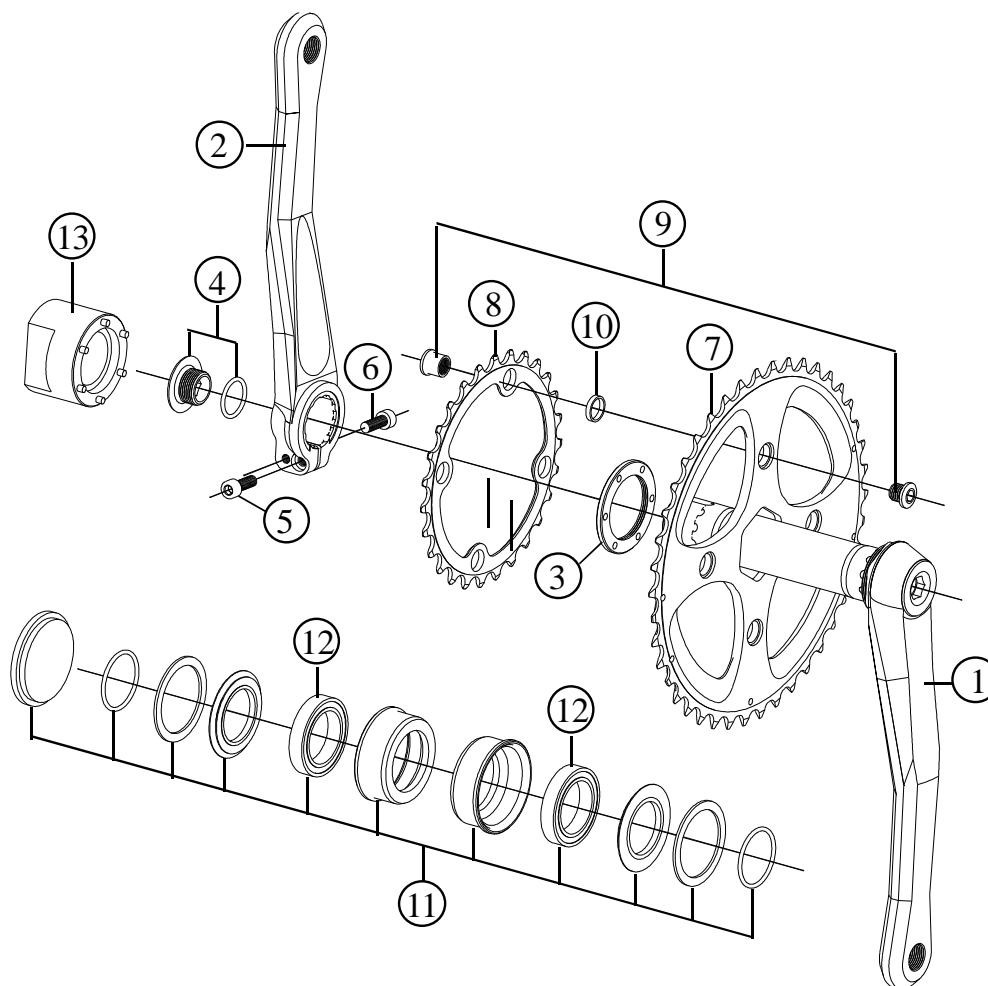


| Item no. | Code | DESCRIPTION | Price € |
|----------|-----------|---|---------------|
| 1 | CUB323R | Integral Right Arm with 30mm Axle High Q-Factor 170-172,5-175 mm – Black | 190,0 |
| 1 | CUB23RLQ | Integral Right Arm with 30mm Axle. Low Q-Factor 170-175 mm - Black | 190,0 |
| 2 | CU24L | Clamp Type Left Arm. High Q-Factor 170-172,5-175 mm - Black | 115,0 |
| 2 | CU24LLQ | Clamp Type Left Arm. Low Q-Factor 170-175 mm - Black | 115,0 |
| 3 | CU006 | Lock Ring | 6,0 |
| 4 | CU18R | Bolt for Play Adjustment. Black, Red, Titan, Blue, Orange. O-Ring 2056 (I.D. 14 x 1,78mm) | 6,0 |
| 5 | TCC515TI | Allen Bolt M5 x 15 / Titanium - Gold Plated | 6,3 |
| 6 | TCC512TI | Allen bolt M5 x 12 / Titanium - Gold Plated | 6,1 |
| 7 | CU42NS | Chain Ring NS 42T BCD 85mm Black anodised | 76,0 |
| 7 | CU40NS | Chain Ring NS 40T BCD 85mm Black anodised | 76,0 |
| 7 | CU38NS | Chain Ring NS 38T BCD 64mm Black anodised | 76,0 |
| 7 | CU36NS | Chain Ring NS 36T BCD 64mm Black anodised | 68,0 |
| 8 | CU27NS | Chain Ring NS 27T BCD 85mm (compat. 40/42NS rings only) Black anodised | 29,0 |
| 8 | CU24NS | Chain Ring NS 24T BCD 64mm (compat. 38NS ring only) Black anodised | 29,0 |
| 8 | CU22NS | Chain Ring NS 22T BCD 64mm (compat. 36NS ring only) Black anodised | 21,0 |
| 9 | CU004G | Chainring Fixing Bolt & Nut Black, Red, Titan, Blue, Orange | Kit of 4 sets |
| 10 | CU004S | Chainring Spacer NS – Light Alloy | Set of 4 pcs |
| 11 | | BB30 Assembly with bearings, lip seals and spacers | 30,0 kit |
| 12 | BB42307RS | Bearing Enduro 61806 42x 30x 7mm | 2pcs |
| 13 | NSTOOL30 | Tool to disassemble the Lock Ring – Axle 30mm | 19,0 |

Specifications are subject to change without notice

Front Crankset for MTB
CU2-M18NS Press-Fit 89,5 / 92mm
BB30 85mm

2012

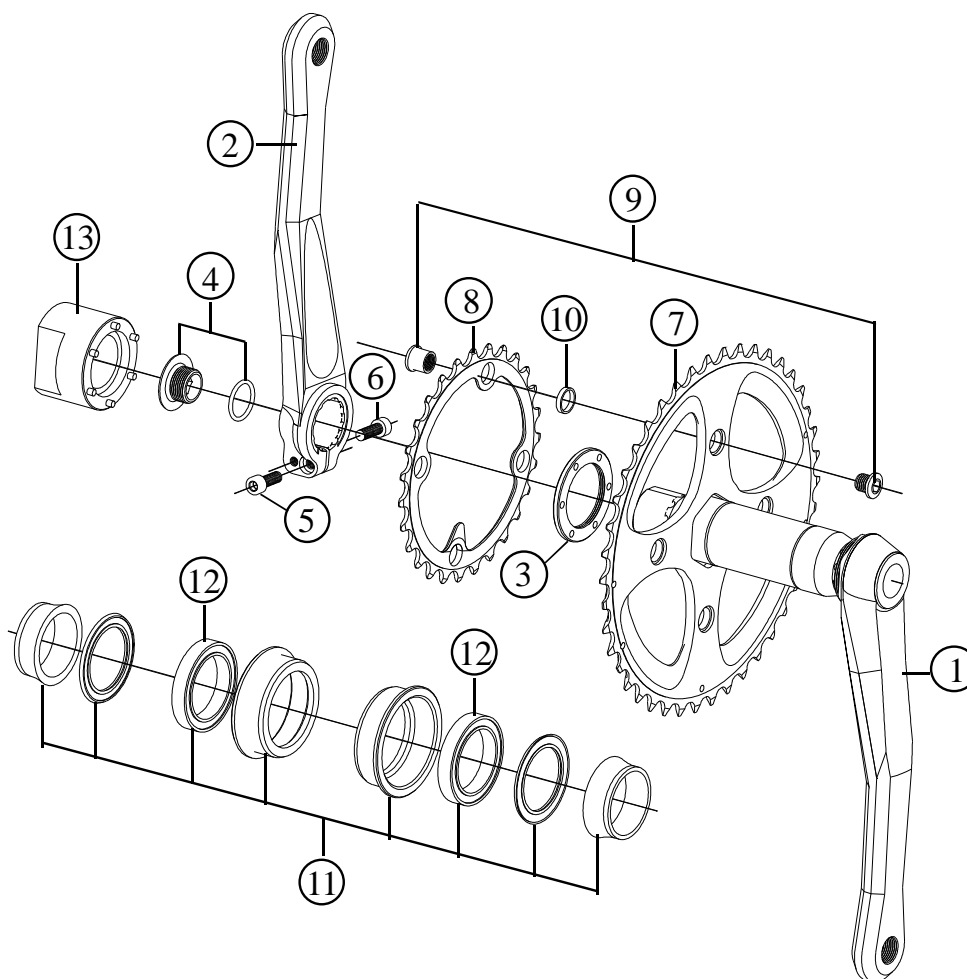


| Item no. | Code | DESCRIPTION | Price € |
|----------|-----------|---|---------------|
| 1 | CU23R | Integral Right Arm with 25mm Axle High Q-Factor 170-172,5-175 mm – Black | 170,0 |
| 1 | CU23RLQ | Integral Right Arm with 25mm Axle. Low Q-Factor 170-175 mm - Black | 170,0 |
| 2 | CU24L | Clamp Type Left Arm. High Q-Factor 170-172,5-175 mm - Black | 115,0 |
| 2 | CU24LLQ | Clamp Type Left Arm. Low Q-Factor 170-175 mm - Black | 115,0 |
| 3 | CU006 | Lock Ring | 6,0 |
| 4 | CU18R | Bolt for Play Adjustment. Black, Red, Titan, Blue, Orange. O-Ring 2056 (I.D. 14 x 1,78mm) | 6,0 |
| 5 | TCC515TI | Allen Bolt M5 x 15 / Titanium - Gold Plated | 6,3 |
| 6 | TCC512TI | Allen bolt M5 x 12 / Titanium - Gold Plated | 6,1 |
| 7 | CU42NS | Chain Ring NS 42T BCD 85mm Black anodised | 76,0 |
| 7 | CU40NS | Chain Ring NS 40T BCD 85mm Black anodised | 76,0 |
| 7 | CU38NS | Chain Ring NS 38T BCD 64mm Black anodised | 76,0 |
| 7 | CU36NS | Chain Ring NS 36T BCD 64mm Black anodised | 68,0 |
| 8 | CU27NS | Chain Ring NS 27T BCD 85mm (compat. 40/42NS rings only) Black anodised | 29,0 |
| 8 | CU24NS | Chain Ring NS 24T BCD 64mm (compat. 38NS ring only) Black anodised | 29,0 |
| 8 | CU22NS | Chain Ring NS 22T BCD 64mm (compat. 36NS ring only) Black anodised | 21,0 |
| 9 | CU004G | Chainring Fixing Bolt & Nut Black, Red, Titan, Blue, Orange | Kit of 4 sets |
| 10 | CU004S | Chainring Spacer NS – Light Alloy | Set of 4 pcs |
| 11 | | Press-Fit Assembly with bearings, cups, shields, O-Ring and Bearing Press-Tool | 71,0 kit |
| 12 | BB37257RS | Bearing NACHI 6805 2RS 37x 25x 7mm (double seal) | 2pcs |
| 13 | NSTOOL25 | Tool to disassemble the Lock Ring – Axle 25mm | 19,0 |

Specifications are subject to change without notice

Front Crankset for MTB
CU2-M18NS – Press-Fit 30 73mm

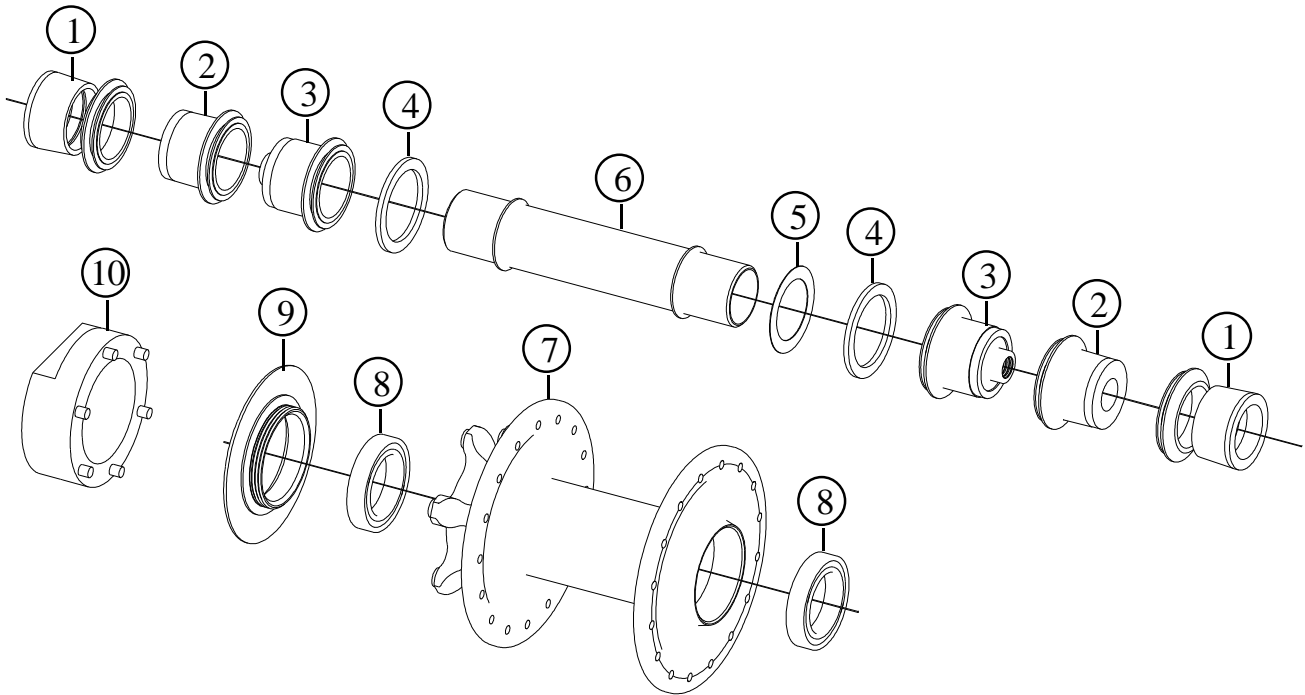
2012



| Item no. | Code | DESCRIPTION | Price € |
|----------|-----------|---|---------------|
| 1 | CUB323R | Integral Right Arm with 30mm Axle High Q-Factor 170-172,5-175 mm – Black | 190,0 |
| 1 | CUB23RLQ | Integral Right Arm with 30mm Axle. Low Q-Factor 170-175 mm - Black | 190,0 |
| 2 | CU24L | Clamp Type Left Arm. High Q-Factor 170-172,5-175 mm - Black | 115,0 |
| 2 | CU24LLQ | Clamp Type Left Arm. Low Q-Factor 170-175 mm - Black | 115,0 |
| 3 | CU006 | Lock Ring | 6,0 |
| 4 | CU18R | Bolt for Play Adjustment. Black, Red, Titan, Blue, Orange. O-Ring 2056 (I.D. 14 x 1,78mm) | 6,0 |
| 5 | TCC515TI | Allen Bolt M5 x 15 / Titanium - Gold Plated | 6,3 |
| 6 | TCC512TI | Allen bolt M5 x 12 / Titanium - Gold Plated | 6,1 |
| 7 | CU42NS | Chain Ring NS 42T BCD 85mm Black anodised | 76,0 |
| 7 | CU40NS | Chain Ring NS 40T BCD 85mm Black anodised | 76,0 |
| 7 | CU38NS | Chain Ring NS 38T BCD 64mm Black anodised | 76,0 |
| 7 | CU36NS | Chain Ring NS 36T BCD 64mm Black anodised | 68,0 |
| 8 | CU27NS | Chain Ring NS 27T BCD 85mm (compat. 40/42NS rings only) Black anodised | 29,0 |
| 8 | CU24NS | Chain Ring NS 24T BCD 64mm (compat. 38NS ring only) Black anodised | 29,0 |
| 8 | CU22NS | Chain Ring NS 22T BCD 64mm (compat. 36NS ring only) Black anodised | 21,0 |
| 9 | CU004G | Chainring Fixing Bolt & Nut Black, Red, Titan, Blue, Orange | Kit of 4 sets |
| 10 | CU004S | Chainring Spacer NS – Light Alloy | Set of 4 pcs |
| 11 | | Press-Fit 30 Assembly with bearings, cups, shields, O-Ring and Bearing Press-Tool | 50,0 kit |
| 12 | BB42307RS | Bearing Enduro 61806 42x 30x 7mm | 2pcs |
| 13 | NSTOOL30 | Tool to disassemble the Lock Ring – Axle 30mm | 19,0 |

Specifications are subject to change without notice

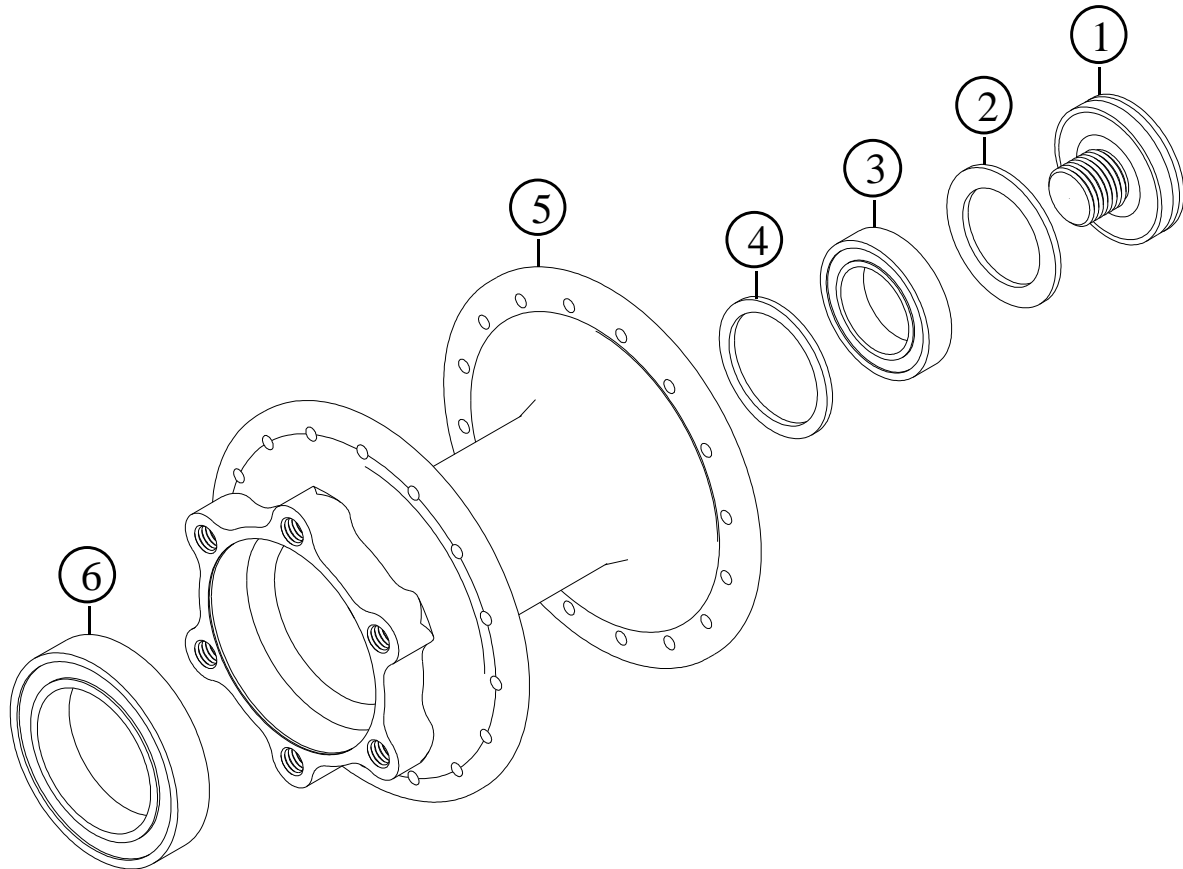
2012



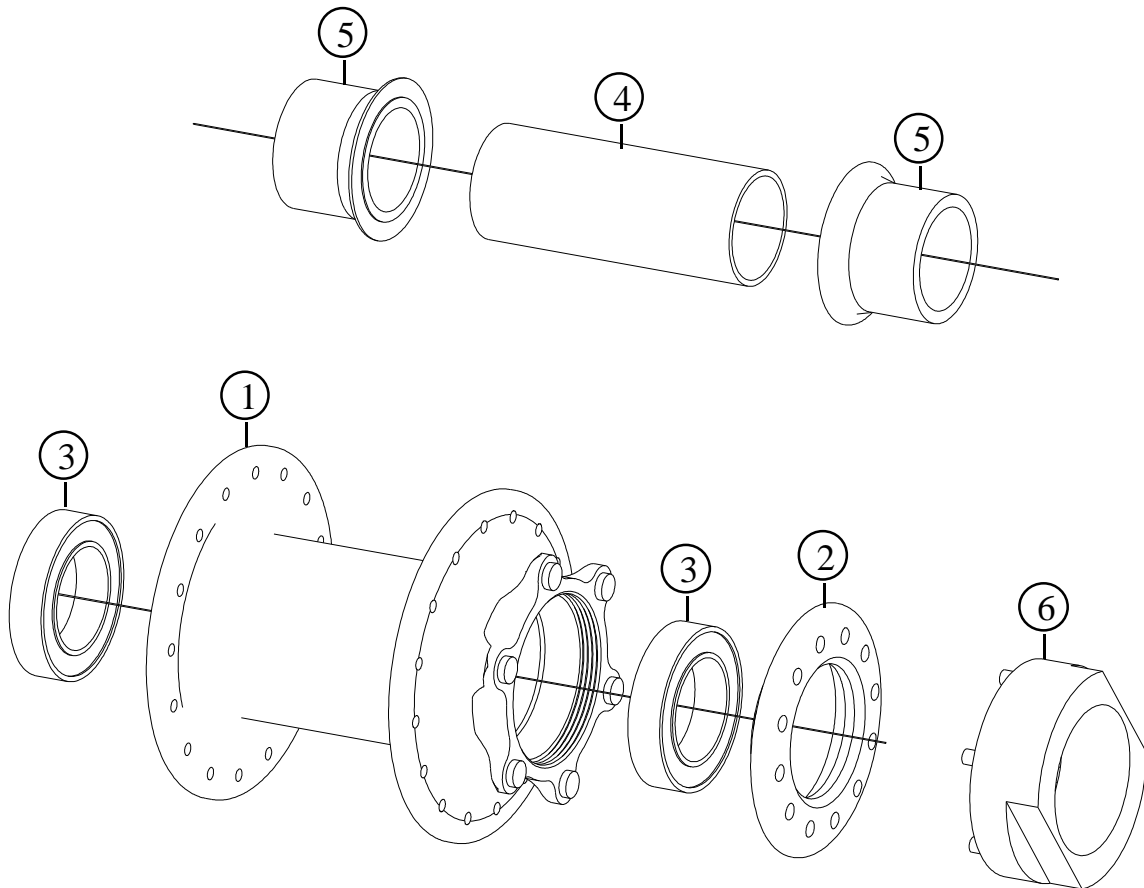
| Item no. | Code | DESCRIPTION | Price € |
|----------|------------|--|----------|
| 1 | FHURACE15 | Axle Cap End for 15mm forks. Inner dia. 17mm/ Light Alloy Set of 2pcs | 12,0 set |
| 2 | FHURACE9 | Axle Cap End for 9mm Through-Axle Quick Release. Inner dia. 17mm/ Light Alloy. Set of 2pcs | 12,0 set |
| 3 | FHURACE | Axle Cap End for Quick Release with 5mm Axle. Inner dia. 17mm/ Light Alloy Set of 2pcs | 12,0 set |
| 4 | RS262014 | Rubber Seal: 26 x 20 x 1,4mm 2pcs | 0,3 pc |
| 5 | SW1724015 | Steel washer: 17 x 24 x 0,15mm | 0,1 |
| 6 | FHURAX | Axle dia. 17mm. Light Alloy. Hard Anodised | 25,0 |
| 7 | FHURB28CH | Hub Body /Alloy. Chrome. 28H | 52,0 |
| 7 | FHURB24CH | Hub Body /Alloy. Chrome. 24H | 52,0 |
| 7 | FHURB32BLK | Hub Body /Alloy. Black anodised. 32H | 50,0 |
| 7 | FHURB32RD | Hub Body /Alloy. Red anodised. 32H | 50,0 |
| 7 | FHURB32TT | Hub Body /Alloy. Titan anodised. 32H | 50,0 |
| 7 | FHURB32BE | Hub Body /Alloy. Blue anodised. 32H | 50,0 |
| 7 | FHURB32OR | Hub Body /Alloy. Orange anodised. 32H | 50,0 |
| 7 | FHURB28RD | Hub Body /Alloy. Red anodised. 28H | 50,0 |
| 7 | FHURB28TT | Hub Body /Alloy. Titan anodised. 28H | 50,0 |
| 7 | FHURB28BE | Hub Body /Alloy. Blue anodised. 28H | 50,0 |
| 7 | FHURB28OR | Hub Body /Alloy. Orange anodised. 28H | 50,0 |
| 8 | EB61803 | Bearing Enduro 17 x 26 x 5mm ABEC5 61803 2RS 2pcs | 9,1 pc |
| 9 | URDLR6H | Disc Lock-Ring for use with specific 6 pin Tool / Light Alloy | 12,0 |
| 10 | URDLRTOOL | Disc Lock-Ring Tool (6 pins) | 10,0 |
| | | | |
| | | | |
| | | | |

Note: modified from Spare Part Manual dated 2011

Specifications are subject to change without notice



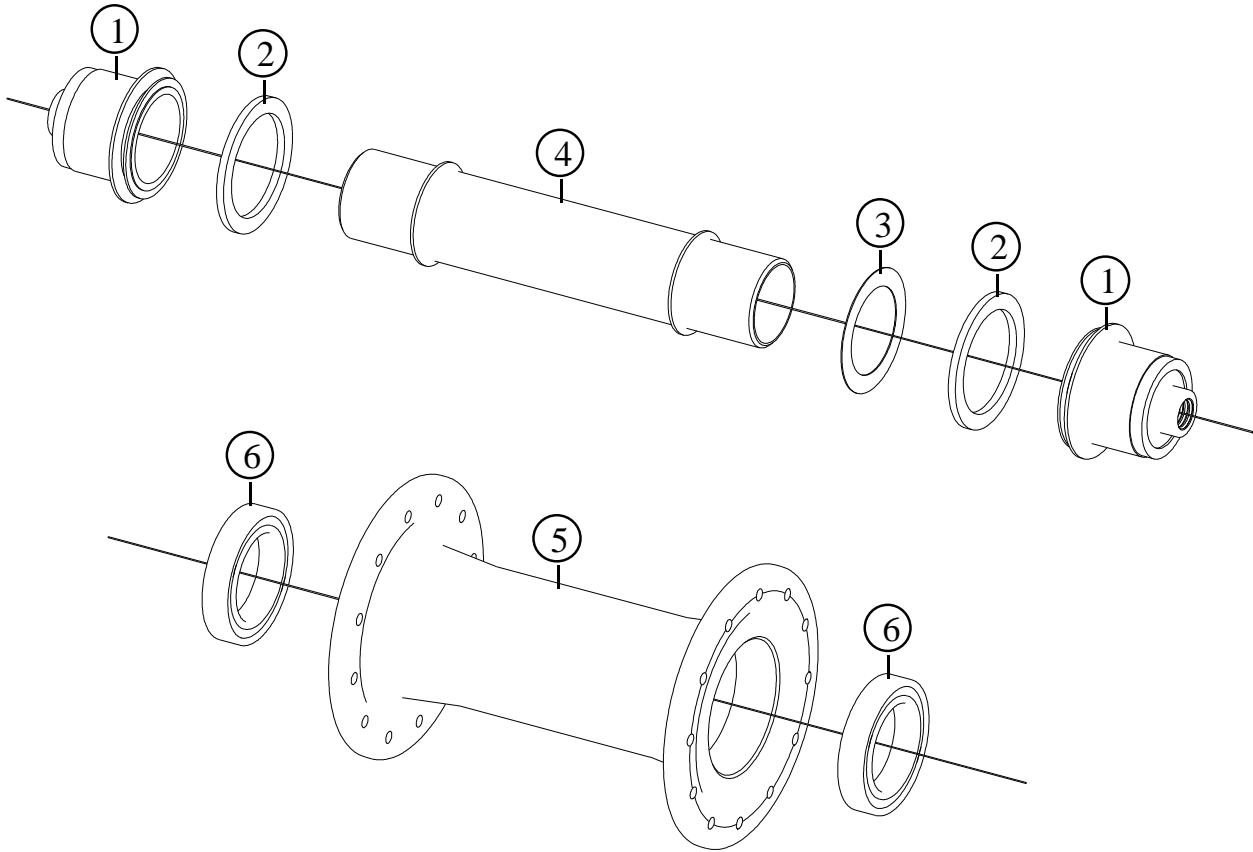
| Item no. | Code | DESCRIPTION | Price € |
|----------|--------------|--|---------|
| 1 | FH116L | Lock-nut bolt in light alloy. Thread 10x1 mm | 6,0 |
| 2 | 3FH02DS | Rubber Seal: 24 x 17 x 1 | 0,3 |
| 3 | EB6802 | Bearing Enduro 24 x 15 x 5mm ABEC5 6802 2RS | 8,5 |
| 4 | FHURLYSP | Bearing Spacer 23,8 x 19,5 x 1,2mm / Light Alloy | 0,6 |
| 5 | FHURLYB32BLK | Hub Body Lefty / Alloy. Black anodised. 32H | 77,0 |
| 6 | BB37257RS | Bearing Nachi 6805 2RS 37 x 25 x 7mm (double seal) | 17,7 |
| | | | |
| | | | |
| | | | |
| | | | |



| Item no. | Code | DESCRIPTION | Price € |
|----------|-------------|--|-------------------------|
| 1 | FHURQR20BLK | Hub Body QR20 / Alloy. Black anodised. 32H | 60,0 |
| 2 | URDLR6HQR20 | Disc Lock-Ring QR20 for use with specific 6 pin Tool / Light Alloy | 12,0 |
| 3 | EB61804 | Enduro bearing 20 x 32 x 7mm ABEC5 2RS | 2pcs 10,6 pc |
| 4 | FHTISP | Spacer 22x57mm. Light Alloy | 5,0 |
| 5 | FHTIACQR20 | Axle Cap End QR20 compatible with QR20 forks. Light Alloy | Set of 2pcs 14,0 set |
| 6 | URDLRTOOL | Disc Lock-Ring Tool (6 pins) | 10,0 |
| | | | |
| | | | |
| | | | |
| | | | |

Specifications are subject to change without notice

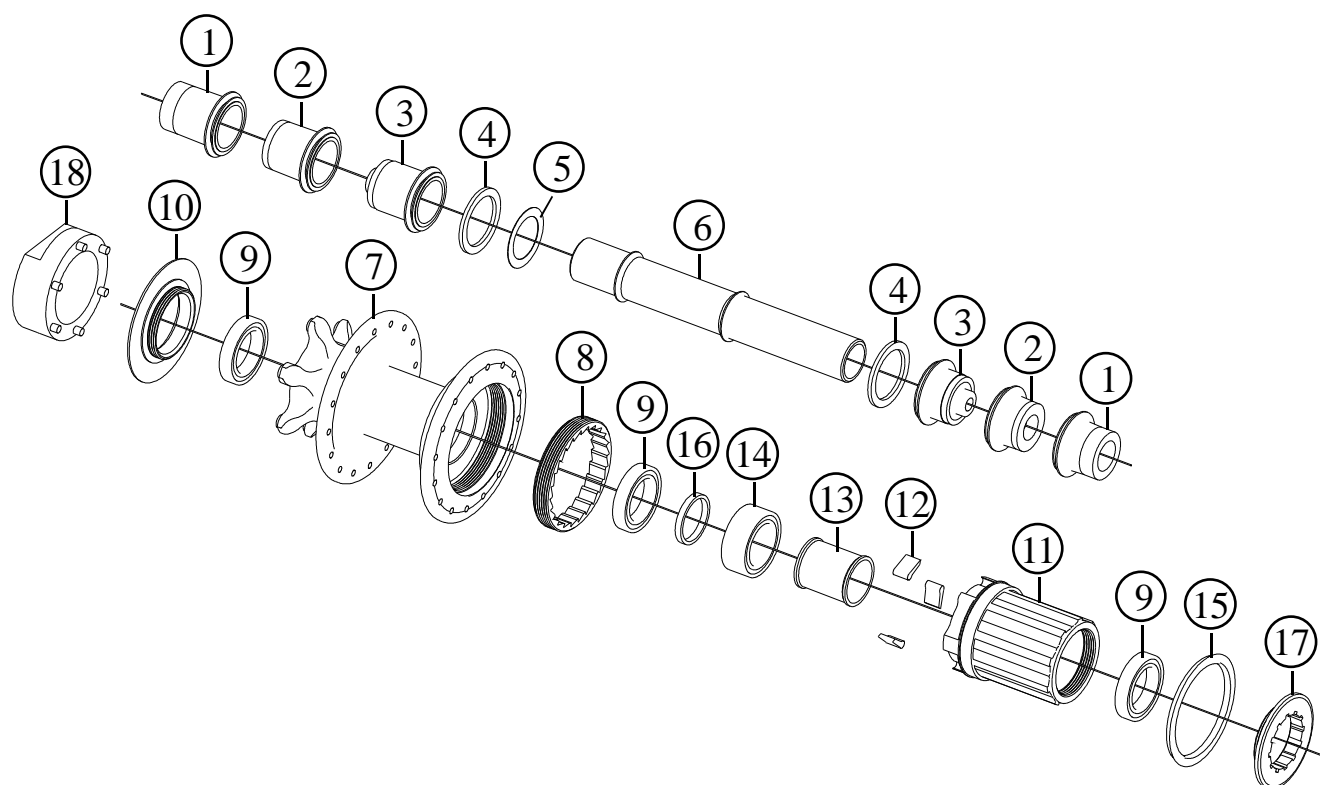
2012



| Item no. | Code | DESCRIPTION | Price € |
|----------|------------|--|-------------------------|
| 1 | FHURACE | Axle Cap End. Inner dia. 17mm/ Light Alloy | Set of 2pcs 12,0 set |
| 2 | RS262014 | Rubber Seal: 26 x 20 x 1,4mm | 2pcs 0,3 pc |
| 3 | SW1724015 | Steel washer: 17 x 24 x 0,15mm | 0,1 |
| 4 | FHURAX | Axle dia. 17mm. Light Alloy. Hard Anodised | 25,0 |
| 5 | FHARB20CH | Hub Body /Alloy. Chrome. 20H | 44,0 |
| 5 | FHARB24CH | Hub Body /Alloy. Chrome. 24H | 44,0 |
| 5 | FHARB24BLK | Hub Body /Alloy. Black anodised. 24H | 40,0 |
| 6 | EB61803 | Bearing Enduro 17 x 26 x 5mm ABEC5 61803 2RS | 2pcs 9,1 pc |
| | | | |
| | | | |
| | | | |

Specifications are subject to change without notice

2012

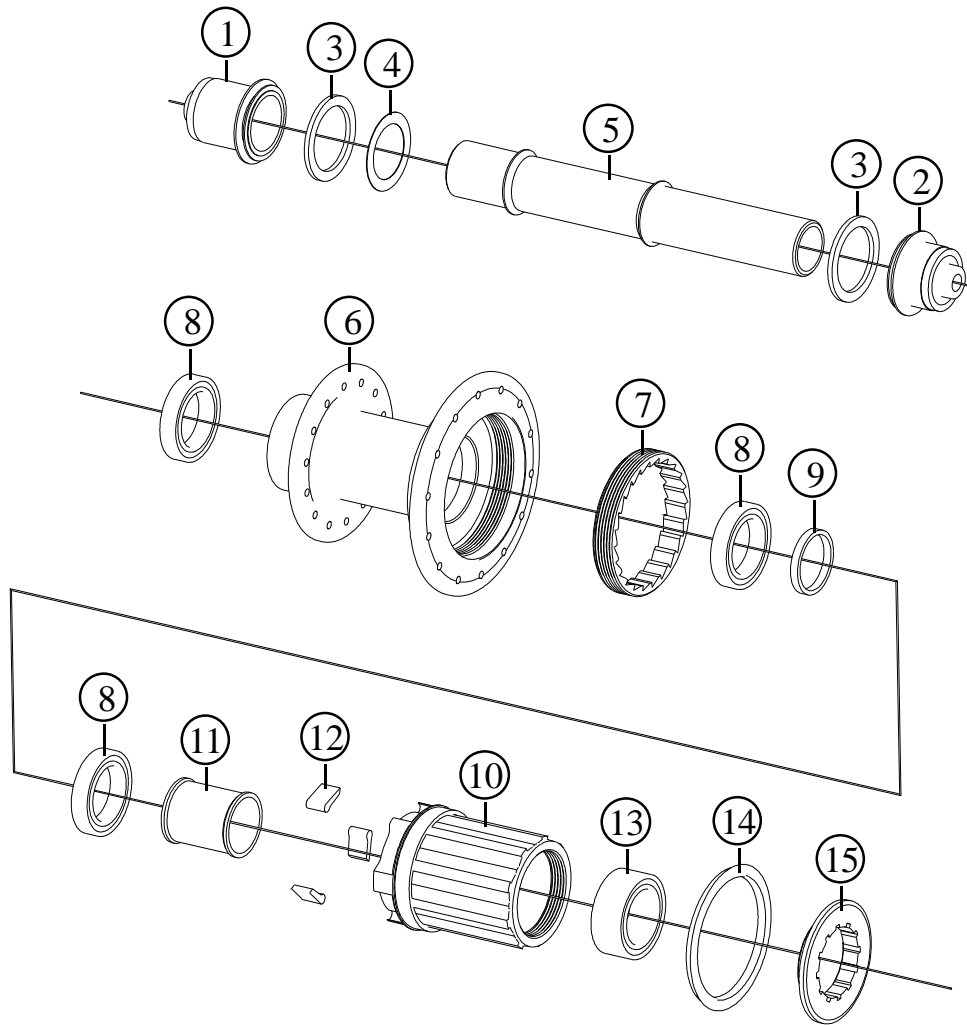


| Item no. | Code | DESCRIPTION | Price € |
|----------|-------------|--|----------------|
| 1 | RHURACEX12 | Axle Cap Ends X12 compatible (142 x12mm). L&R. Inner dia. 17mm / Light Alloy | 12,0 set |
| 2 | RHURACE10 | Axle Cap Ends for 10mm Through-Axle Quick R. L&R. Inner dia. 17mm / Light Alloy | 12,0 set |
| 3 | RHURACE | Axle Cap Ends for Quick Release with 5mm axle. L & R. Inner dia. 17mm/ Light Alloy | 12,0 set |
| 4 | RS262014 | Rubber Seal: 26 x 20 x 1,4mm | 2pcs 0,3 pc |
| 5 | SW1724015 | Steel washer: 17 x 24 x 0,15mm | 0,1 pc |
| 6 | RHURAX | Axle dia. 17mm. Length 123,5mm. Light Alloy. Hard Anodised | 30,0 |
| 7 | RHURB28CH | Hub Body /Alloy. Chrome. 28H | 62,0 |
| 7 | RHURB32BLK | Hub Body /Alloy. Black anodised. 32H | 60,0 |
| 7 | RHURB32RD | Hub Body /Alloy. Red anodised. 32H | 60,0 |
| 7 | RHURB32TT | Hub Body /Alloy. Titan anodised. 32H | 60,0 |
| 7 | RHURB32BE | Hub Body /Alloy. Blue anodised. 32H | 60,0 |
| 7 | RHURB32OR | Hub Body /Alloy. Orange anodised. 32H | 60,0 |
| 8 | RHURTIIR | Teethed Ring in Titanium | 44,0 |
| 9 | EB61803 | Enduro Bearing 17 x 26 x 5mm ABEC5 2RS | 3pcs 9,1 pc |
| 10 | URDLR6H | Disc Lock-Ring for use with specific 6 pin Tool / Light Alloy | 12,0 |
| 11 | RHURFWT | Freewheel Body. Light Alloy. Titan Anodised | 30,0 |
| 12 | RHURFWP | Freewheel Pawl in High Steel + Coil Spring | 3 sets 8,0 set |
| 13 | RHURFWS | Freewheel Spacer 20 x 17 x 23mm. Light Alloy | 2,0 |
| 14 | EB3803 | Enduro Bearing 17 x 26 x 10mm. Double Row. 2RS | 16,3 |
| 15 | SE3744525VG | Rubber Lip Seal SE 37 x 44,5 x 2,5 VG | 3,0 |
| 16 | RHURBS | Bearing Spacer 20x17x2,8mm Light Alloy | 0,5 |
| 17 | RHLRSH11 | Lock-ring in light alloy for cog-set – 11T | 9,0 |
| 18 | URDLRTOOL | Disc Lock-Ring Tool (6 pins) | 10,0 |
| | | | |
| | | | |
| | | | |
| | | | |
| | | | |
| | | | |
| | | | |
| | | | |
| | | | |

Note: modified from Spare Part Manual dated 2011

Specifications are subject to change without notice

2012

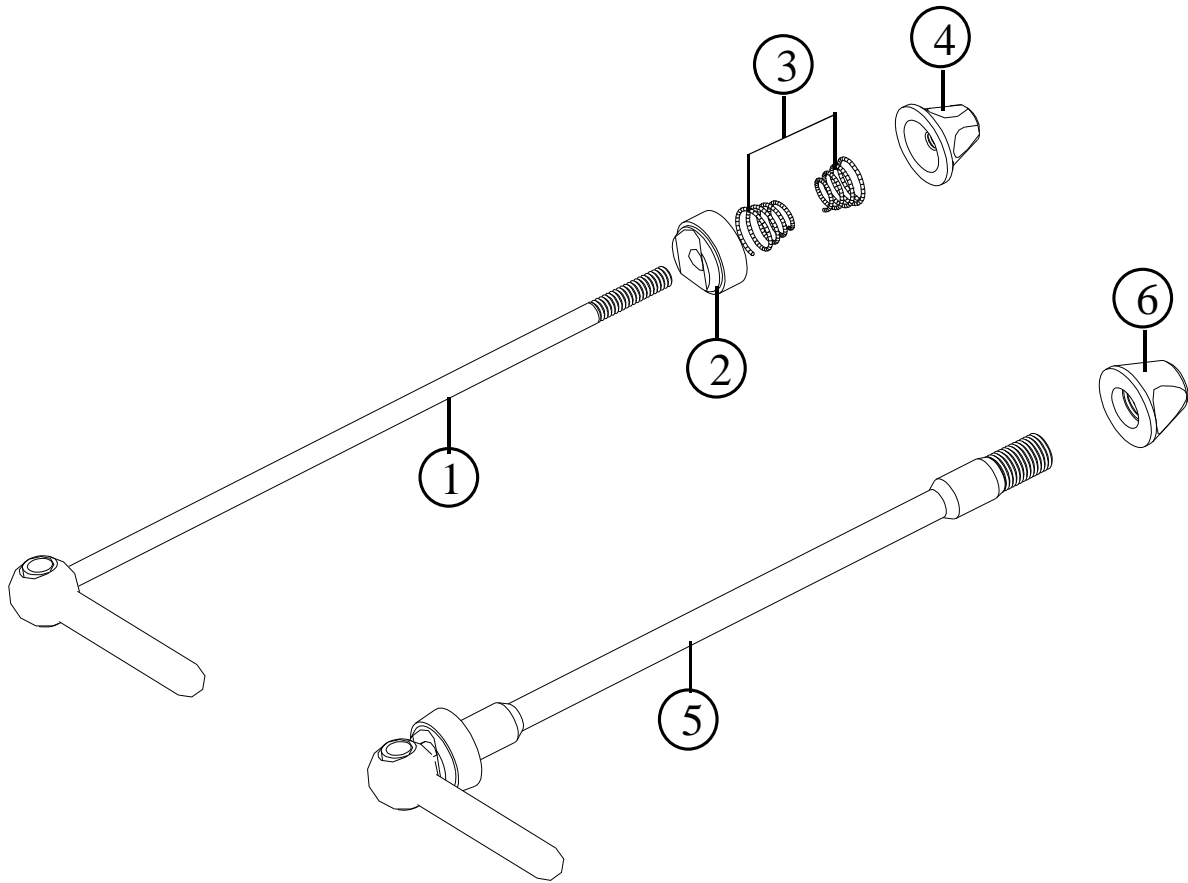


| Item no. | Code | DESCRIPTION | Price € |
|----------|-------------|--|----------------|
| 1 | RHURACEL | Axle Cap End. Left Side. Inner dia. 17mm/ Light Alloy | 6,0 |
| 2 | RHURACER | Axle Cap End. Right Side. Inner dia. 17mm/ Light. Alloy | 6,0 |
| 3 | RS262014 | Rubber Seal: 26 x 20 x 1,4mm | 2pcs 0,3 pc |
| 4 | SW1724015 | Steel washer: 17 x 24 x 0,15mm | 0,1 |
| 5 | RHURAXR | Axle dia. 17mm. Length 118.5mm. Light Alloy. Hard Anodised | 30,0 |
| 6 | RHARB28CH | Hub Body /Alloy. Chrome. 28H | 55,0 |
| 6 | RHARB24CH | Hub Body /Alloy. Chrome. 24H | 55,0 |
| 6 | RHARB28BLK | Hub Body /Alloy. Black anodised. 28H | 51,0 |
| 7 | RHURTITR | Teethed Ring in Titanium (Ariel Chrome) | 44,0 |
| 7 | RHURSTR | Teethed Ring in Steel (Ariel Pro) | 16,0 |
| 8 | EB61803 | Enduro Bearing 17 x 26 x 5mm ABEC5 2RS | 3pcs 9,1 pc |
| 9 | RHURBS | Bearing Spacer 20x17x2,8mm Light Alloy | 0,3 |
| 10 | RHURFWB | Freewheel Body. Light Alloy. Blue Anodised | 30,0 |
| 11 | RHURFWS | Freewheel Spacer 20 x 17 x 23mm. Light Alloy | 2,0 |
| 12 | RHURFWP | Freewheel Pawl in High Steel + Coil Spring | 3 sets 8,0 set |
| 13 | EB3803 | Enduro Bearing 17 x 26 x 10mm. Double Row. 2RS | 16,3 |
| 14 | SE3744525VG | Rubber Lip Seal SE 37 x 44,5 x 2,5 VG | 3,0 |
| 15 | RHLRSH11 | Lock-ring in light alloy for cog-set - 11T | 9,0 |
| 15 | RHLRSH12 | Lock-ring in light alloy for cog-set - 12T | 9,0 |
| | | | |
| | | | |

Specifications are subject to change without notice

Quick Release
SK10-R Team SK10-M Team
SK10 Pro
TASK Team

2012



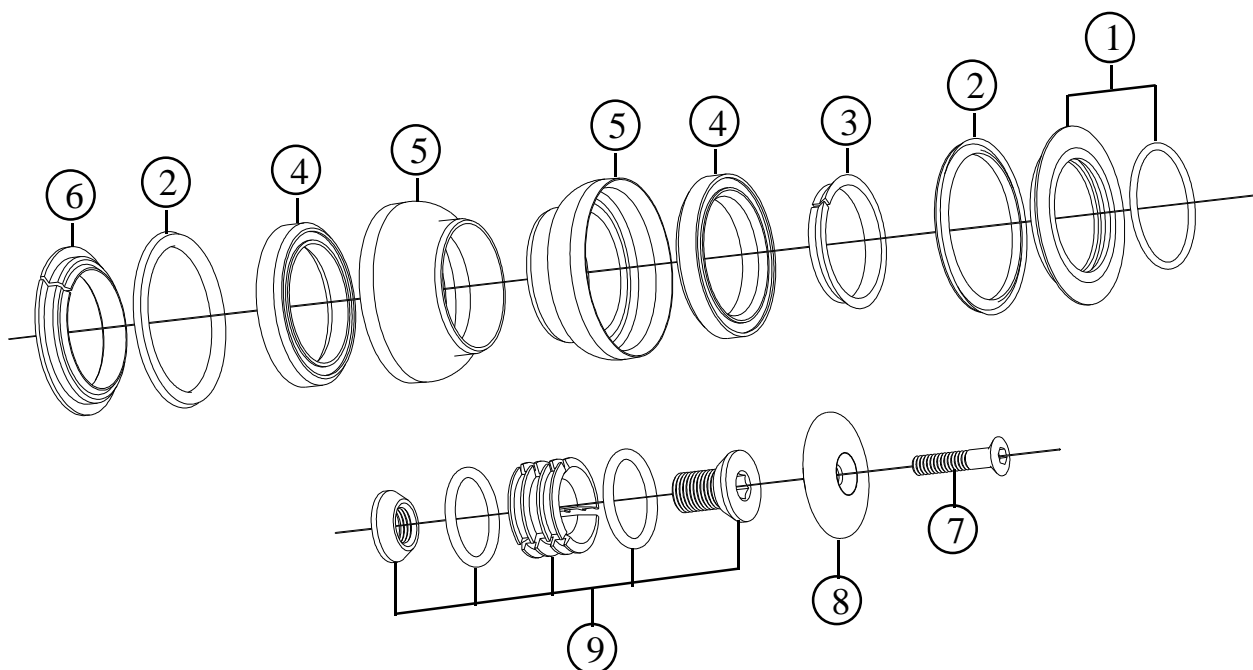
| Item no. | Code | DESCRIPTION | Price € |
|----------|-----------|---|------------------------|
| 1 | QRSK10TF | Front SK10 Team Lever & Axle (Ti. 4mm) Red, Gold, Titan, Blue, Orange, Black | 24,5 |
| 1 | QRSK10PF | Front SK10 Pro Lever Black & Axle Assembly (Steel 4,5mm) | 10,5 |
| 1 | QRSK10TRR | Rear SK10-R Team Lever & Axle (Ti. 4mm) Red, Gold, Titan, Blue, Orange, Black | 25,5 |
| 1 | QRSK10TRM | Rear SK10-M Team Lever & Axle (Ti. 4mm) Red, Gold, Titan, Blue, Orange, Black | 25,5 |
| 1 | QRSK10PR | Rear SK10 Pro Lever Black & Road or MTB Axle Assembly (Steel 4,5mm) | 11,0 |
| 2 | QRSK10B | Washer with concave Delrin pad | 4,0 |
| 3 | QR00B | Spring | Set of 2pcs 2,0 set |
| 4 | QR00C | Nut for SK10 Team Axle with M4 thread | 3,0 |
| 4 | QR00CP | Nut for SK10 Pro Axle with M4,5 Thread | 3,0 |
| 5 | QRTTFRD | Task Team Front Axle (9mm dia). Red, Titan, Black, Blue, Orange Lever | 26,5 |
| 5 | QRTTR | Task Team Rear Axle (10mm dia.). Red, Titan, Black, Blue, Orange Lever | 30,5 |
| 6 | QR00D | Nut for Task Team Axle (front or rear) | 3,0 |
| | | | |
| | | | |
| | | | |
| | | | |

Note: modified from Spare Part Manual dated 2011

Specifications are subject to change without notice

Head Set
D-SET
1 1/8" Standard Threadless
(S.H.I.S. EC34/28,6 | EC34/30)

2012



1 1/8" EXPANDER-PLUG TEAM

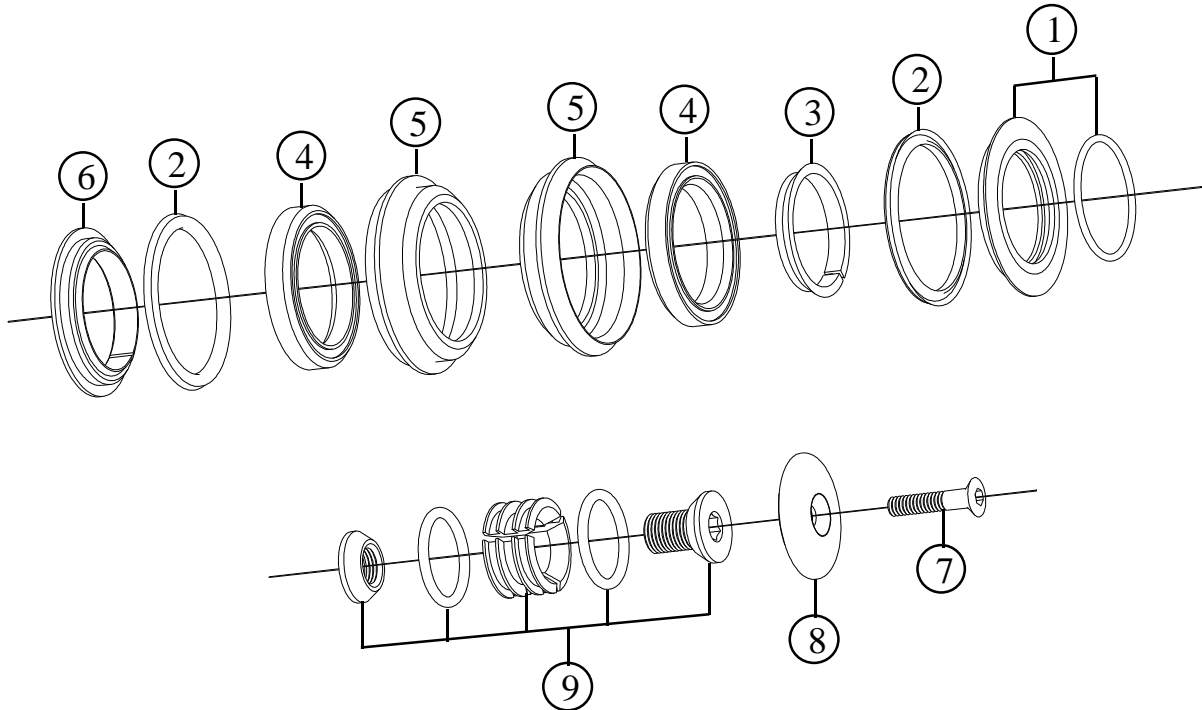
| Item no. | Code | DESCRIPTION | Price € |
|----------|-------------|---|---------|
| 1 | HSDSUCABLK | Upper Head Cone Assembly with O-Ring 2112 (ID 28,30 x 1,78mm) Black anodised | 7,0 |
| 1 | HSDSUCARD | Upper Head Cone Assembly with O-Ring 2112 (ID 28,30 x 1,78mm) Red anodised | 7,0 |
| 1 | HSDSUCATT | Upper Head Cone Assembly with O-Ring 2112 (ID 28,30 x 1,78mm) Titan anodised | 7,0 |
| 1 | HSDSUCABE | Upper Head Cone Assembly with O-Ring 2112 (ID 28,30 x 1,78mm) Blue anodised | 7,0 |
| 1 | HSDSUCAOR | Upper Head Cone Assembly with O-Ring 2112 (ID 28,30 x 1,78mm) Orange anodised | 7,0 |
| 2 | SE3744525VG | Rubber Lip Seal SE 37x44,4x2,5 VG (2pcs) | 3,0 pc |
| 3 | HSC202 | Upper Head Split Cone / Light Alloy | 3,0 |
| 4 | BBACB3645CS | Bearing ABC 36°x 45° 41 x 30,2 x 6,5mm. Chrome Steel (2pcs) | 8,7 pc |
| 5 | HSDSTHBCBLK | Lower or Upper External Head Cup Housing for 41mm Outer Dia. Bearing / Black anodised | 7,0 pc |
| 6 | HSDSLHC | Lower Head Cone for 1 1/8" Forks | 5,0 |
| 7 | TSCCE525T | Bolt for play adjustment M5 x 25mm. Cone-Head / Titanium. Gold plated | 6,5 |
| 8 | EP201TBLK | Cap / Light Alloy / Black anodised | 6,0 |
| 8 | EP201TRD | Cap / Light Alloy / Red anodised | 6,0 |
| 8 | EP201TTT | Cap / Light Alloy / Titan anodised | 6,0 |
| 8 | EP201TBE | Cap / Light Alloy / Blue anodised | 6,0 |
| 8 | EP201TOR | Cap / Light Alloy / Orange anodised | 6,0 |
| 9 | EP200 | Expander-Plug assembly | 8,0 set |

Note: modified from Spare Part Manual dated 2011

Specifications are subject to change without notice

Head Set
D-SET ZS
1 1/8" Zero Stack
(S.H.I.S. ZS44/28,6 | ZS44/30)

2012



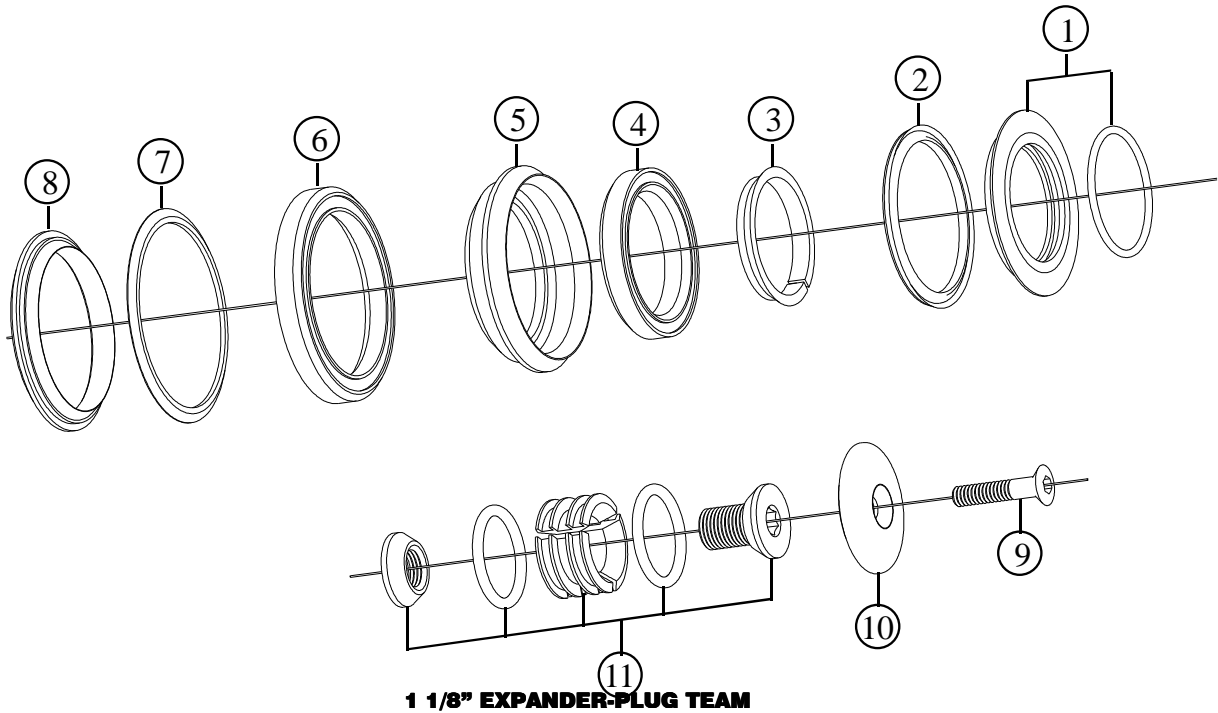
1 1/8" EXPANDER-PLUG TEAM

| Item no. | Code | DESCRIPTION | Price € |
|----------|-------------|---|---------|
| 1 | HSDSUCABL | Upper Head Cone Assembly with O-Ring 2112 (ID 28,30 x 1,78mm) Black anodised | 7,0 |
| 1 | HSDSUCARD | Upper Head Cone Assembly with O-Ring 2112 (ID 28,30 x 1,78mm) Red anodised | 7,0 |
| 1 | HSDSUCATT | Upper Head Cone Assembly with O-Ring 2112 (ID 28,30 x 1,78mm) Titan anodised | 7,0 |
| 1 | HSDSUCABE | Upper Head Cone Assembly with O-Ring 2112 (ID 28,30 x 1,78mm) Blue anodised | 7,0 |
| 1 | HSDSUCAOR | Upper Head Cone Assembly with O-Ring 2112 (ID 28,30 x 1,78mm) Orange anodised | 7,0 |
| 2 | SE3744525VG | Rubber Lip Seal SE 37x44,4x2,5 VG (2pcs) | 3,0 pc |
| 3 | HSC202 | Upper Head Split Cone / Light Alloy | 3,0 |
| 4 | BBACB3645C | Bearing ABC 36°x 45° 41 x 30,2 x 6,5mm. Chrome Steel (2pcs) | 8,7 pc |
| 5 | HSDSOZBCB | Lower or Upper Zero Stack Head Cup Housing for 41mm Outer Dia. Bearing / Black anodised | 7,00 pc |
| 6 | HDSLHC | Lower Head Cone for 1 1/8" Forks | 5,00 |
| 7 | TSCCE525T | Bolt for play adjustment M5 x 25mm. Cone-Head / Titanium. Gold plated | 6,5 |
| 8 | EP201TBLK | Cap / Light Alloy / Black anodised | 6,0 |
| 8 | EP201TRD | Cap / Light Alloy / Red anodised | 6,0 |
| 8 | EP201TTT | Cap / Light Alloy / Titan anodised | 6,0 |
| 8 | EP201TBE | Cap / Light Alloy / Blue anodised | 6,0 |
| 8 | EP201TOR | Cap / Light Alloy / Orange anodised | 6,0 |
| 9 | EP200 | Expander-Plug assembly | 8,0 set |
| | | | |
| | | | |
| | | | |

Note: modified from Spare Part Manual dated 2011

Specifications are subject to change without notice

2012

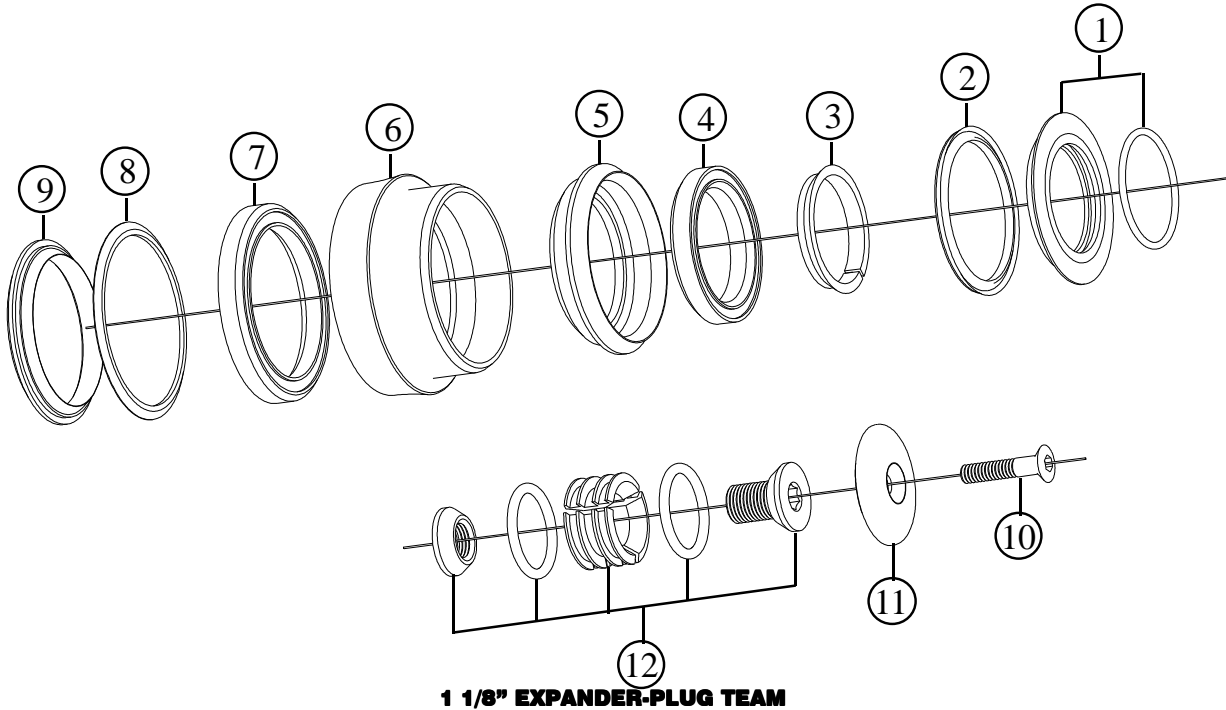


| Item no. | Code | DESCRIPTION | Price € |
|----------|---------------|--|---------|
| 1 | HSDSUCABLK | Upper Head Cone Assembly with O-Ring 2112 (ID 28,30 x 1,78mm) Black anodised | 7,0 |
| 1 | HSDSUCARD | Upper Head Cone Assembly with O-Ring 2112 (ID 28,30 x 1,78mm) Red anodised | 7,0 |
| 1 | HSDSUCATT | Upper Head Cone Assembly with O-Ring 2112 (ID 28,30 x 1,78mm) Titan anodised | 7,0 |
| 1 | HSDSUCABE | Upper Head Cone Assembly with O-Ring 2112 (ID 28,30 x 1,78mm) Blue anodised | 7,0 |
| 1 | HSDSUCAOR | Upper Head Cone Assembly with O-Ring 2112 (ID 28,30 x 1,78mm) Orange anodised | 7,0 |
| 2 | SE3744525VG | Rubber Lip Seal SE 37x44,4x2,5VG | 3,0 |
| 3 | HSC202 | Upper Head Split Cone / Light Alloy | 3,0 |
| 4 | BBACB3645CS | Bearing ABC 36° x 45° 41 x 30,2 x 6,5mm. Chrome Steel | 8,7 |
| 5 | HSDSOZBCBLK | Upper Zero Stack Head Cup Housing for 41mm Outer Dia. Bearing / Black anodised | 7,00 |
| 6 | BBACB156808CC | Bearing ABC 36° x 45° 52 x 40 x 6,5mm. Cromo Steel | 13,9 |
| 7 | SE45525VG | Rubber Lip Seal SE 52x45x2,5VG | 4,0 |
| 8 | HSE2SLHC15 | Lower Head Cone for 1,5" Forks | 8,0 |
| 8 | HSE2SLHC118 | OPTIONAL: Lower Head Cone for 1 1/8" Forks | 8,0 |
| 9 | TSCCE525T | Bolt for play adjustment M5 x 25mm. Cone-Head / Titanium. Gold plated | 6,5 |
| 10 | EP201TBLK | Cap / Light Alloy / Black anodised | 6,0 |
| 10 | EP201TRD | Cap / Light Alloy / Red anodised | 6,0 |
| 10 | EP201TTT | Cap / Light Alloy / Titan anodised | 6,0 |
| 10 | EP201TBE | Cap / Light Alloy / Blue anodised | 6,0 |
| 10 | EP201TOR | Cap / Light Alloy / Orange anodised | 6,0 |
| 11 | EP200 | Expander-Plug assembly | 8,0 set |
| | | | |
| | | | |

Note: modified from Spare Part Manual dated 2011

D-SET 1,5" Taper 49
(S.H.I.S. ZS44/28,6 | EC49/40)
D-SET 1,5" Taper 44
(S.H.I.S. ZS44/28,6 | EC44/40)

2012



1 1/8" EXPANDER-PLUG TEAM

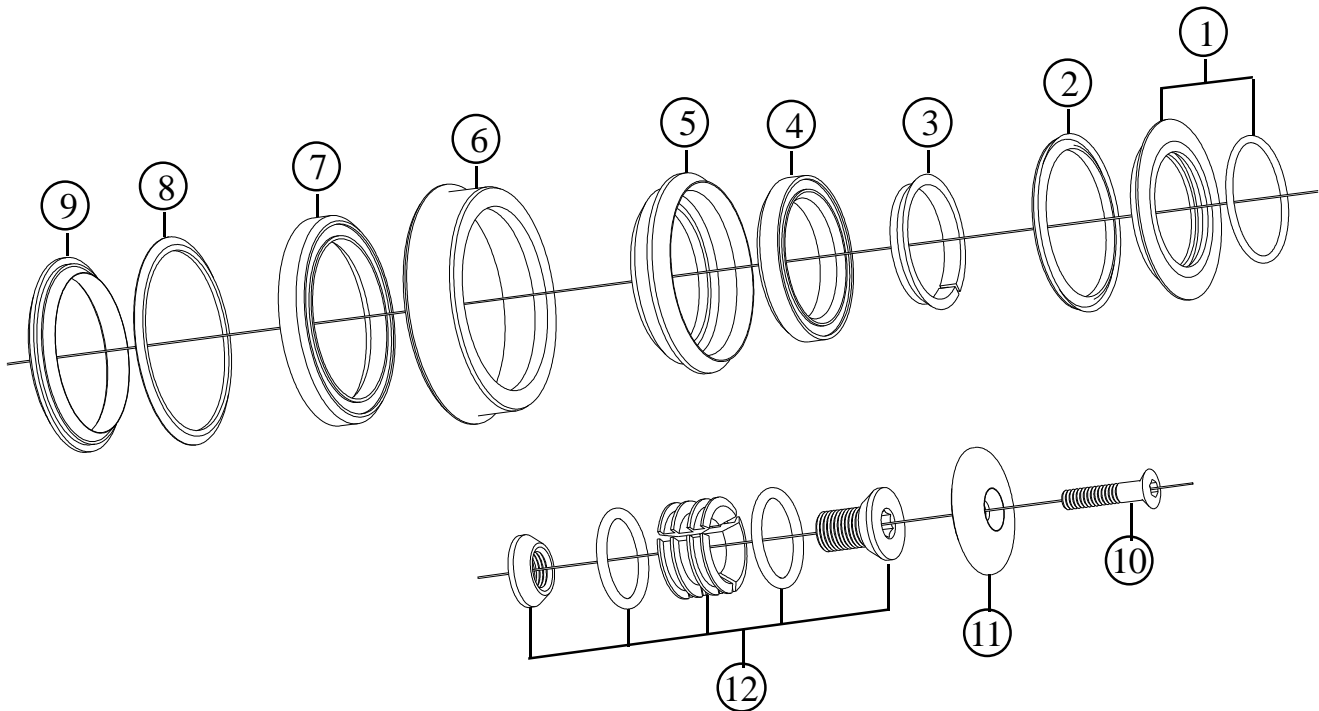
| Item no. | Code | DESCRIPTION | Price € |
|----------|---------------|---|---------|
| 1 | HSDSUCABLK | Upper Head Cone Assembly with O-Ring 2112 (ID 28,30 x 1,78mm) Black anodised | 7,0 |
| 1 | HSDSUCARD | Upper Head Cone Assembly with O-Ring 2112 (ID 28,30 x 1,78mm) Red anodised | 7,0 |
| 1 | HSDSUCATT | Upper Head Cone Assembly with O-Ring 2112 (ID 28,30 x 1,78mm) Titan anodised | 7,0 |
| 1 | HSDSUCABE | Upper Head Cone Assembly with O-Ring 2112 (ID 28,30 x 1,78mm) Blue anodised | 7,0 |
| 1 | HSDSUCAOR | Upper Head Cone Assembly with O-Ring 2112 (ID 28,30 x 1,78mm) Orange anodised | 7,0 |
| 2 | SE3744525VG | Rubber Lip Seal SE 37x44,4x2,5VG | 3,0 |
| 3 | HSC202 | Upper Head Split Cone / Light Alloy | 3,0 |
| 4 | BBACB3645CS | Bearing ABC 36°x 45° 41 x 30,2 x 6,5mm. Chrome Steel | 8,7 |
| 5 | HSDSOZBCBLK | Upper Zero Stack Head Cup Housing for 41mm Outer Dia. Bearing / Black anodised | 7,00 |
| 6 | HSDSEC1549 | Lower External Head Cup Housing for 52mm Outer Dia. Bearing / 49,6mm frame bore | 15,0 |
| 6 | HSDSEC1544 | Lower External Head Cup Housing for 52mm Outer Dia. Bearing / 44mm frame bore | 15,0 |
| 7 | BBACB156808CC | Bearing ABC 36°x 45° 52 x 40 x 6,5mm. Cromo Steel | 13,9 |
| 8 | SE45525VG | Rubber Lip Seal SE 52x45x2,5VG | 4,0 |
| 9 | HSE2SLHC15 | Lower Head Cone for 1,5" Forks | 8,0 |
| 9 | HSE2SLHC118 | OPTIONAL: Lower Head Cone for 1 1/8" Forks | 8,0 |
| 10 | TSCCE525T | Bolt for play adjustment M5 x 25mm. Cone-Head / Titanium. Gold plated | 6,5 |
| 11 | EP201TBLK | Cap / Light Alloy / Black anodised | 6,0 |
| 11 | EP201TRD | Cap / Light Alloy / Red anodised | 6,0 |
| 11 | EP201TTT | Cap / Light Alloy / Titan anodised | 6,0 |
| 11 | EP201TBE | Cap / Light Alloy / Blue anodised | 6,0 |
| 11 | EP201TOR | Cap / Light Alloy / Orange anodised | 6,0 |
| 12 | EP200 | Expander-Plug assembly | 8,0 set |

Note: modified from Spare Part Manual dated 2011

Specifications are subject to change without notice

Head Set
D-SET 1,5" Taper ZS (NEW)
 (S.H.I.S. ZS44/28,6 | ZS56/40)

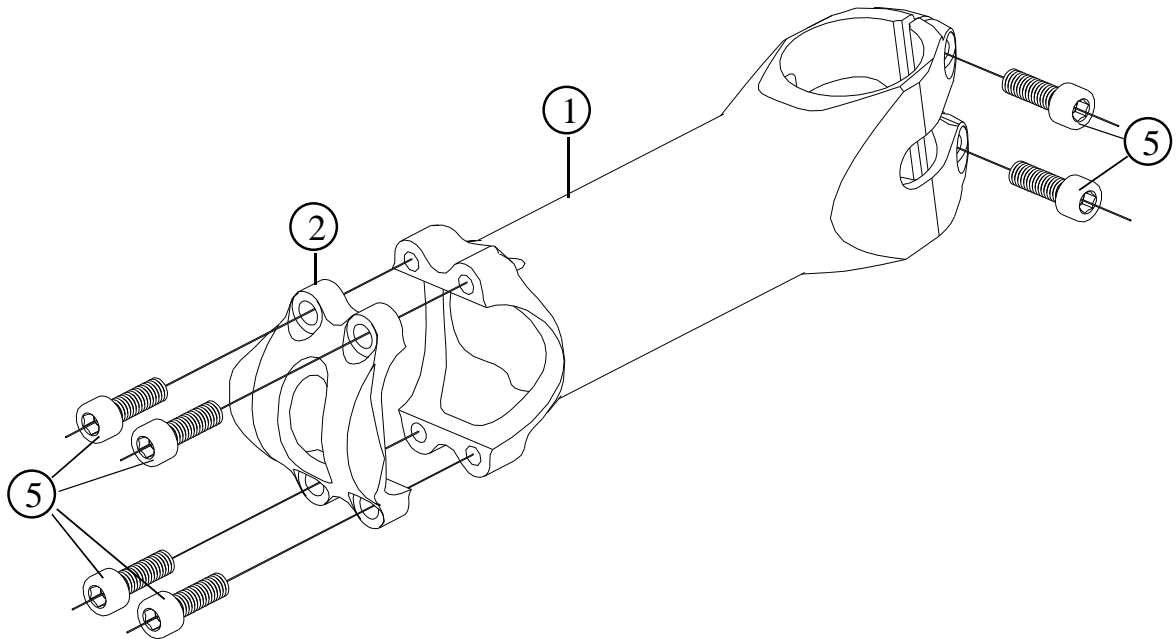
2012



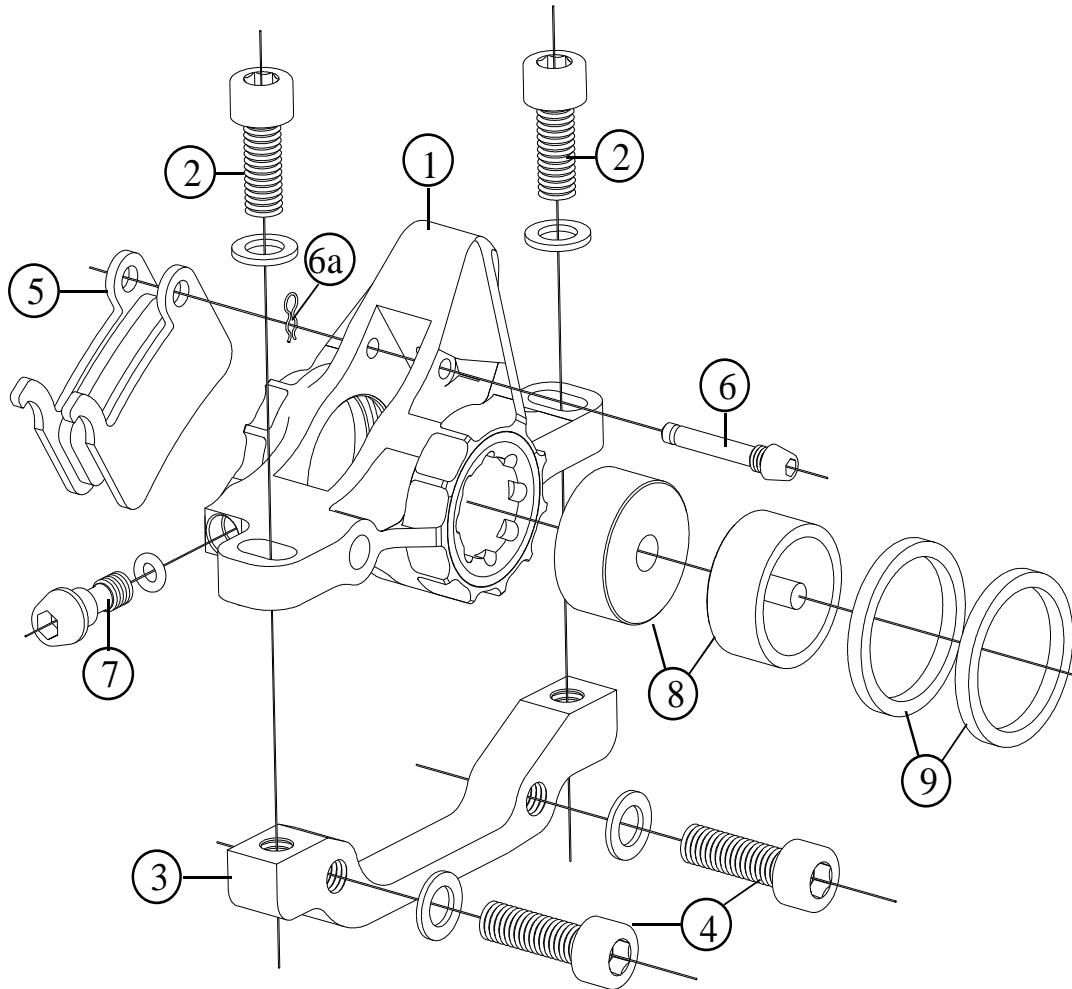
1 1/8" EXPANDER-PLUG TEAM

| Item no. | Code | DESCRIPTION | Price € |
|----------|---------------|---|---------|
| 1 | HSDSUCABLK | Upper Head Cone Assembly with O-Ring 2112 (ID 28,30 x 1,78mm) Black anodised | 7,0 |
| 1 | HSDSUCARD | Upper Head Cone Assembly with O-Ring 2112 (ID 28,30 x 1,78mm) Red anodised | 7,0 |
| 1 | HSDSUCATT | Upper Head Cone Assembly with O-Ring 2112 (ID 28,30 x 1,78mm) Titan anodised | 7,0 |
| 1 | HSDSUCABE | Upper Head Cone Assembly with O-Ring 2112 (ID 28,30 x 1,78mm) Blue anodised | 7,0 |
| 1 | HSDSUCAOR | Upper Head Cone Assembly with O-Ring 2112 (ID 28,30 x 1,78mm) Orange anodised | 7,0 |
| 2 | SE3744525VG | Rubber Lip Seal SE 37x44,4x2,5VG | 3,0 |
| 3 | HSC202 | Upper Head Split Cone / Light Alloy | 3,0 |
| 4 | BBACB3645CS | Bearing ABC 36°x 45° 41 x 30,2 x 6,5mm. Chrome Steel | 8,7 |
| 5 | HSDSOZBCBLK | Upper Zero Stack Head Cup Housing for 41mm Outer Dia. Bearing / Black anodised | 7,00 |
| 6 | HSDSTH1556 | Lower Zero Stack Head Cup Housing for 52mm Outer Dia. Bearing / 56mm frame bore | 15,0 |
| 7 | BBACB156808CC | Bearing ABC 36°x 45° 52 x 40 x 6,5mm. Cromo Steel | 13,9 |
| 8 | SE45525VG | Rubber Lip Seal SE 52x45x2,5VG | 4,0 |
| 9 | HSE2SLHC15 | Lower Head Cone for 1,5" Forks | 8,0 |
| 9 | HSE2SLHC118 | OPTIONAL: Lower Head Cone for 1 1/8" Forks | 8,0 |
| 10 | TSCCE525T | Bolt for play adjustment M5 x 25mm. Cone-Head / Titanium. Gold plated | 6,5 |
| 11 | EP201TBLK | Cap / Light Alloy / Black anodised | 6,0 |
| 11 | EP201TRD | Cap / Light Alloy / Red anodised | 6,0 |
| 11 | EP201TTT | Cap / Light Alloy / Titan anodised | 6,0 |
| 11 | EP201TBE | Cap / Light Alloy / Blue anodised | 6,0 |
| 11 | EP201TOR | Cap / Light Alloy / Orange anodised | 6,0 |
| 12 | EP200 | Expander-Plug assembly | 8,0 set |
| | | | |
| | | | |

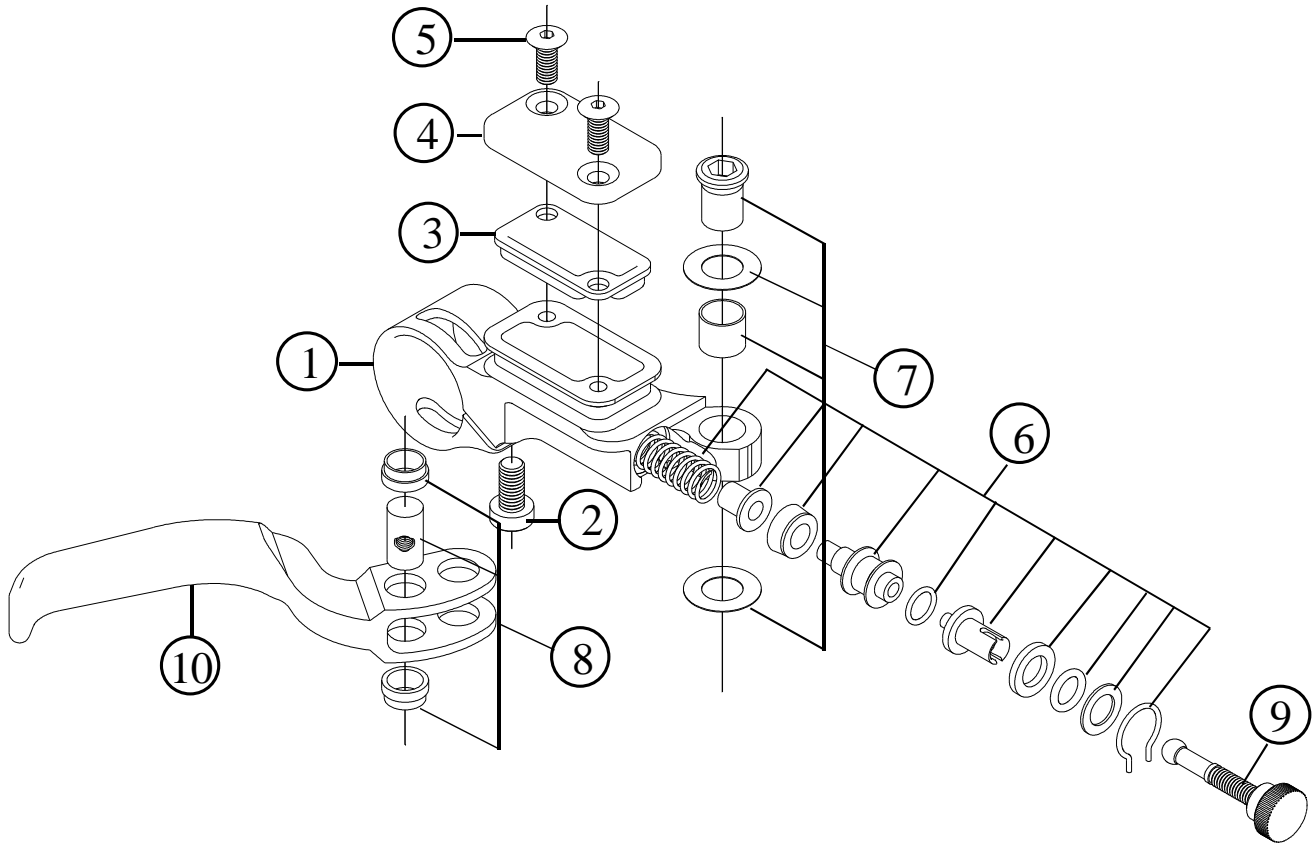
2012



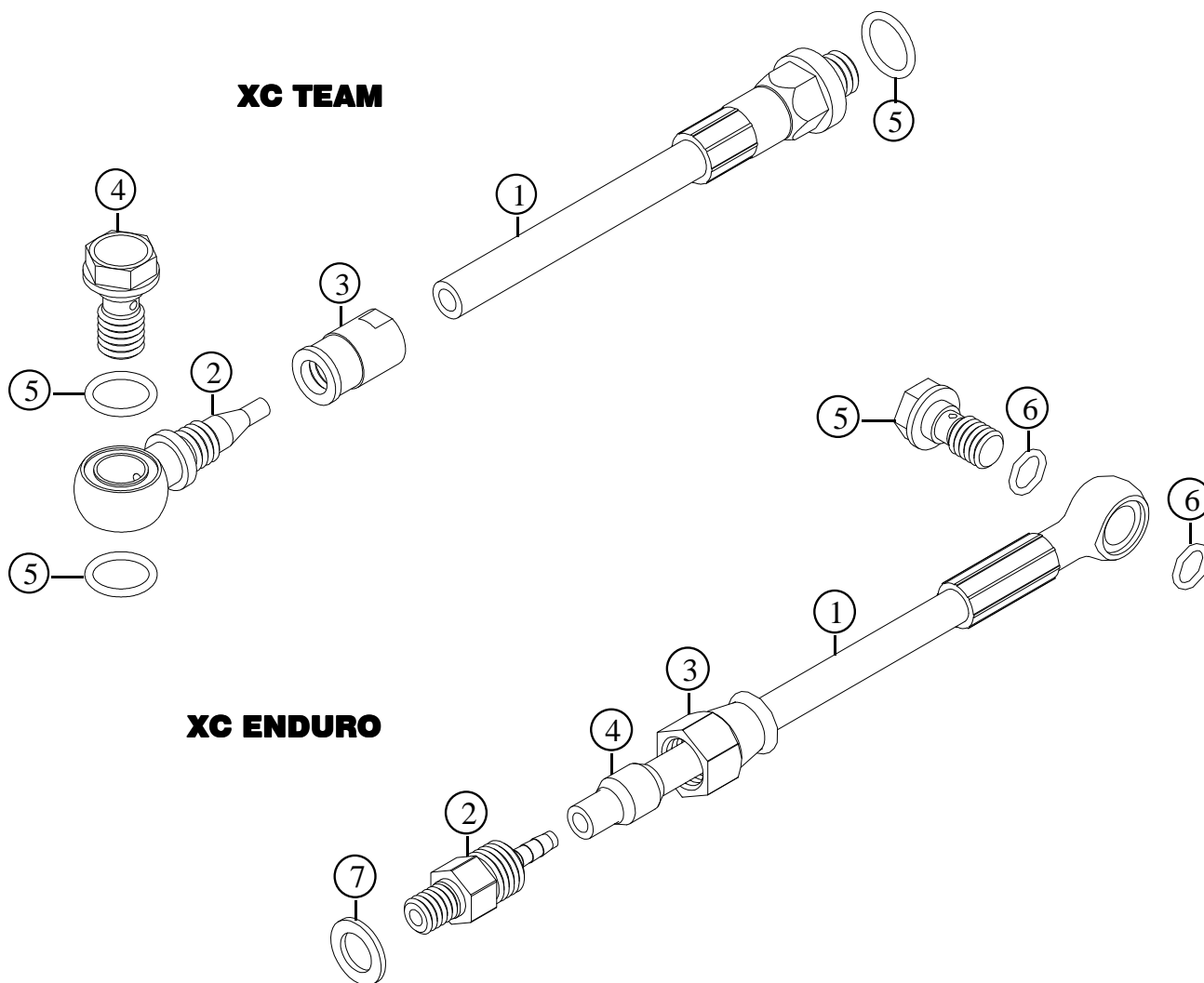
| Item no. | Code | DESCRIPTION | Price € |
|----------|----------|---|--------------|
| 1 | WS6B75 | Light alloy Stem Shaft 75mm (Black) | 66,0 |
| 1 | WS6B90 | Light alloy Stem Shaft 90mm (Black) | 66,0 |
| 1 | WS6B100 | Light alloy Stem Shaft 100mm (Black) | 66,0 |
| 1 | WS3B110 | Light alloy Stem Shaft 110mm (Black) | 66,0 |
| 2 | WS6BCBLK | Stem Cap / Black | 16,0 |
| 2 | WS6BCTT | Stem Cap / Titan | 16,0 |
| 2 | WS6BCRD | Stem Cap / Red | 16,0 |
| 2 | WS6BCBE | Stem Cap / Blue | 16,0 |
| 2 | WS6BCOR | Stem Cap / Orange | 16,0 |
| 5 | TCC515TI | Allen Bolt M5x15 / Titanium - Gold Plated | 6pcs 6,30 pc |
| | | | |
| | | | |

2012


| Item no. | Code | DESCRIPTION | Price € |
|----------|------------|--|------------------|
| 1 | DBRCAHARD | Caliper Body & Cap. Post-Mount Type. Hard Anodised with Red Cap | 65,0 |
| 1 | DBRCAHATT | Caliper Body & Cap. Post-Mount Type. Hard Anodised with Titan Cap | 65,0 |
| 1 | DBRCAHABLK | Caliper Body & Cap. Post-Mount Type. Hard Anodised with Black Cap | 65,0 |
| 1 | DBRCAHABE | Caliper Body & Cap. Post-Mount Type. Hard Anodised with Blue Cap | 65,0 |
| 1 | DBRCAHAOR | Caliper Body & Cap. Post-Mount Type. Hard Anodised with Orange Cap | 65,0 |
| 2 | TCC615SS | Body Fixing Bolts M6x15 & Washer. Stainless Steel (XC Enduro) | 2pcs 0,3 pc |
| 2 | TCC615TI | Body Fixing Bolts M6x15 & Washer. Titanium, Gold Plated (XC Team) | 2pcs 5,7 pc |
| 3 | AU01 | Adapter from I.S to P-M: 160mm front or 140mm rear rotor. With two steel bolts | 11,0 |
| 3 | AU02 | Adapter from I.S to P-M: 180mm front or 160mm rear rotor. With two steel bolts | 11,0 |
| 3 | AU04 | Adapter rear 180mm. With two steel bolts | 11,0 |
| 3 | AU31 | Adapter for Post-Mount fork: 180mm front rotor. With steel bolts and washers | 16,0 |
| 4 | TCC615TI | OPTIONAL: Adapter Fixing Bolts M6x15 & Washer. Titanium, Gold Plated | 2pcs 5,7 pc |
| 5 | AD014MS | Pads. XTR compatible w/spring. Metallic compound. Steel Backing (Copper colour) | 21,0 |
| 5 | AD014SS | Pads. XTR compatible w/spring. SemiMetallic Compound. Steel Backing (Black colour) | 12,0 |
| 5 | AD014SA | Pads. XTR compatible w/spring. Organic Compound. Alloy Backing (Silver colour) | 19,0 |
| 6-6a | DBR300CB | Pads Fixing Pin. Light Alloy with Pin Spring. Black Anodised | 3,0 |
| 7 | DBR300CD | Bleed Bolt. Light Alloy & O-Ring | 3,0 |
| 8 | DBR300P | Pistons. Hard Anodised | 2pcs 20,0 set |
| 9 | DBR300S | EPDM Seals | 2pcs 4,0 set |

2012


| Item no. | Code | DESCRIPTION | Price € |
|----------|-------------|--|--------------|
| 1 | DBRPUHAR | Brake Pump Body. Right side. Hard Anodised | 45,0 |
| 1 | DBRPUHAL | Brake Pump Body. Left side. Hard Anodised | 45,0 |
| 2 | TCC510T | Allen Bolt M5x12 / Titanium - Gold Plated (XC Team) | 2pcs 6,1 pc |
| 2 | TCC510S | Allen Bolt M5x10 / Steel (XC Enduro) | 2pcs 0,08 pc |
| 3 | DBR300RM | Reservoir Membrane. EPDM Rubber | 2,0 |
| 4 | DBR300LBBLK | Reservoir Cap. Light Alloy – Black Anodised | 7,0 |
| 4 | DBR300LBRD | Reservoir Cap. Light Alloy – Red Anodised | 7,0 |
| 4 | DBR300LBTT | Reservoir Cap. Light Alloy – Titan Anodised | 7,0 |
| 4 | DBR300LBBE | Reservoir Cap. Light Alloy – Blue Anodised | 7,0 |
| 4 | DBR300LBOR | Reservoir Cap. Light Alloy – Orange Anodised | 7,0 |
| 5 | TSCCE45S | Come Head Bolt. M4 x 8mm. Stainless Steel (XC Enduro) | 2pcs 0,05 pc |
| 5 | TSCCE48TI | Come Head Bolt. M4x8mm. Titanium, Gold Plated (XC Team) | 2pcs 4,5 pc |
| 6 | DBR300PK | Piston Kit. Piston Parts, EPDM Seals, Washers, Springs and Assembly Tool | 20,0 |
| 7 | DBR300BLBA | Brake Lever Bushing, Axle, Shims and Seeger | 7,0 |
| 8 | DBR300BLPRA | Brake Lever Push Rod Axle & Bushings | 7,0 |
| 9 | DBR300BLPR | Brake Lever Push Rod and Reach Adjuster | 7,0 |
| 10 | DBR300BL | Brake Lever. Right or Left side. Light Alloy. Black Anodised | 25,0 |



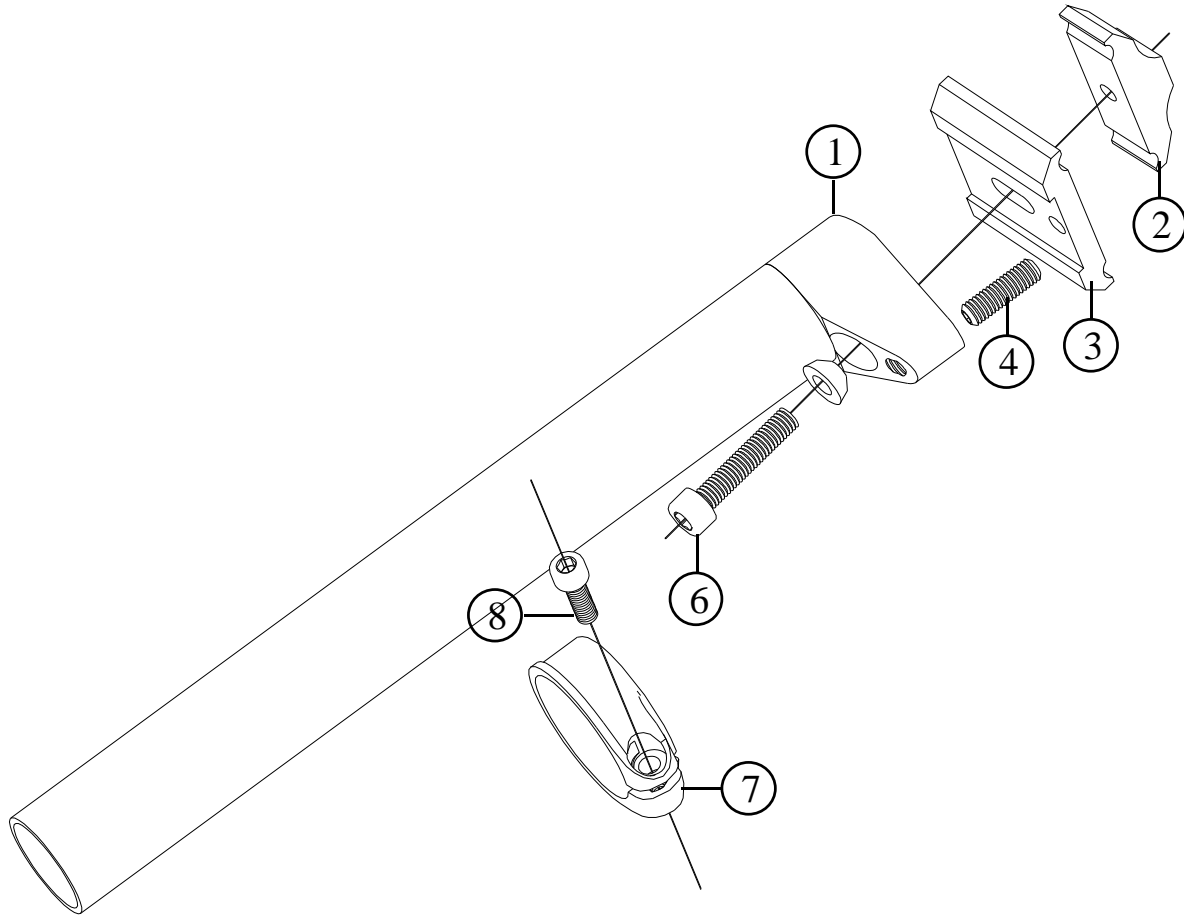
| Item no. | Code | DESCRIPTION | Price € |
|------------------|------------|---|-------------------------|
| XC TEAM | | | |
| 1 | FTCT850 | Frentubo Carbotech Hose and Pressed M-Joint (light alloy). Front 850mm long | 35,0 |
| 1 | FTCT1450 | Frentubo Carbotech Hose and Pressed M-Joint (light alloy). Rear 1450mm long | 45,0 |
| 1 | FTCT1750 | Frentubo Carbotech Hose and Pressed M-Joint (light alloy). Rear 1750mm long | 50,0 |
| 2 | FT13508/B | Banjo in Light Alloy | 5,0 |
| 3 | FT13608/A | Locking Nut for Banjo in Light Alloy | 5,0 |
| 4 | FTB50106 | Locking Bolt of Banjo in Titanium – Gold Plated | 11,0 |
| 5 | OREPDM7x1 | O-Ring 7 x 1mm in EPDM rubber | 3pcs 0,35 pc |
| XC ENDURO | | | |
| 1 | HHBB-950 | Stainless Steel Braided hose with Pressed Banjo (steel). Front 950mm long | 23,5 |
| 1 | HH-BB-1550 | Stainless Steel Braided hose with Pressed Banjo (steel). Rear 1550mm long | 23,5 |
| 1 | HH-BB-1750 | Stainless Steel Braided hose with Pressed Banjo (steel). Rear 1750mm long | 26,0 |
| 2 | HP-02-10 | M-Joint in Steel | 4,5 |
| 3 | HP-04-10 | Locking Nut of M-Joint in Stainless Steel | 2,5 |
| 4 | HP-06-10 | Compress Barrel for 5,5mm hose | Set of 10pcs 9,5 set |
| 5 | HP-03-10 | Locking Bolt of Banjo in Stainless Steel | 2,0 |
| 6 | OR-EPDM6x1 | O-Ring 6 x 1mm in EPDM rubber | 2pcs 0,35 pc |
| 7 | CW96 | Copper Washer 9,9 x 6 x 1mm | 1,0 |

ST-R11 Ti. 31,6 x 250

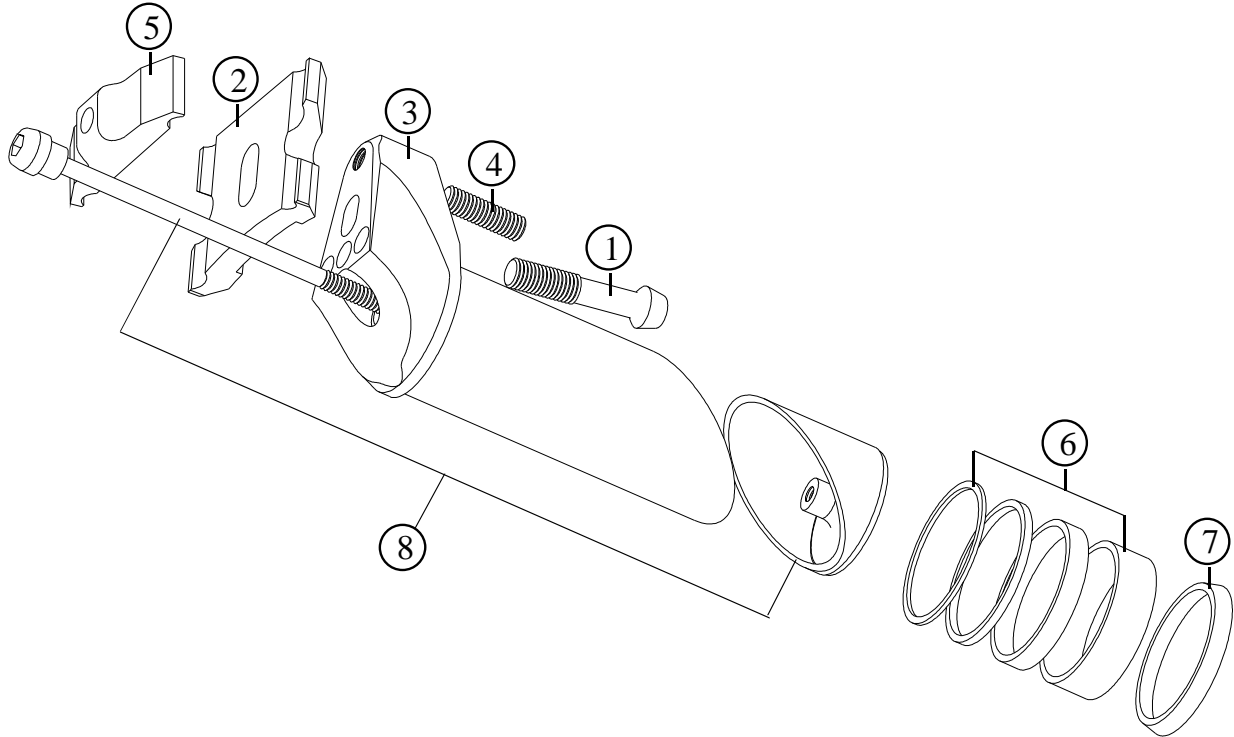
ST-M11 Ti. 30,9 x 370

ST-M11 Ti. 31,6 x 370

2012



| Item no. | Code | DESCRIPTION | Price € |
|----------|------------|--|---------|
| 1 | STR1131625 | Light Alloy Post 31,6 x 250mm | 55,0 |
| 1 | STM1131637 | Light Alloy Post 31,6 x 370mm | 66,0 |
| 1 | STM1130937 | Light Alloy Post 30,9 x 370mm | 66,0 |
| 2 | STOS03T | Rails Clamp for M7 Titanium Bolt (Black anodised) | 10,5 |
| 3 | STOS02 | Rails Platform / Light Alloy | 14,0 |
| 4 | STOS04 | Dowel M6 | 0,1 |
| 6 | TCC730T | Allen Bolt M7 x 35mm in Titanium – Gold Plated. Special design | 10,7 |
| 7 | STAC35 | SC35 Seat Clamp. 34,9mm dia Black, Titan, Red, Blue, Orange anodised. Without Bolt | 11,0 |
| 7 | STAC32 | SC32 Seat Clamp. 31,6mm dia Black, Titan, Red, Blue, Orange anodised. Without Bolt | 11,0 |
| 8 | TCC515T | Allen Bolt M5 x 15 / Titanium – Gold Plated | 6,3 |
| | | | |
| | | | |
| | | | |



| Item no. | Code | DESCRIPTION | Price € |
|----------|----------|--|---------|
| 1 | TCC730T | Allen Bolt M7 x 35mm in Titanium – Gold Plated. Special design | 10,7 |
| 1 | TCC730 | Allen Bolt M6 x 35mm in Steel | 0,3 |
| 2 | STOS02 | Rails Platform / Light Alloy | 14,0 |
| 3 | ST11EBT | Light alloy Body for Titanium Hardware | 45,0 |
| 3 | ST11EB | Light alloy Body for Steel Hardware | 44,0 |
| 4 | STOS04 | Dowel M6 | 0,1 |
| 5 | STOS03T | Rails Clamp for M7 Titanium Bolt (Black anodised) | 10,5 |
| 5 | STOS03 | Rails Clamp for M6 Steel Bolt (Silver anodised) | 10,5 |
| 6 | ST11ESPK | Kit of 4 Plastic Spacers | 4,0 |
| 7 | ST11ESPE | Tapered Plastic Spacer | 1,0 |
| 8 | ST11EPT | Pulling Rod in Titanium and Slanted Base | 24,0 |
| 8 | ST11EP | Pulling Rod in Steel and Slanted Base | 16,0 |
| | | | |
| | | | |
| | | | |
| | | | |
| | | | |
| | | | |

Seatpost for MTB

ST-M10 Ti. 27,2 x 350 (NEW)

ST-M10 Ti. 30,9 x 350

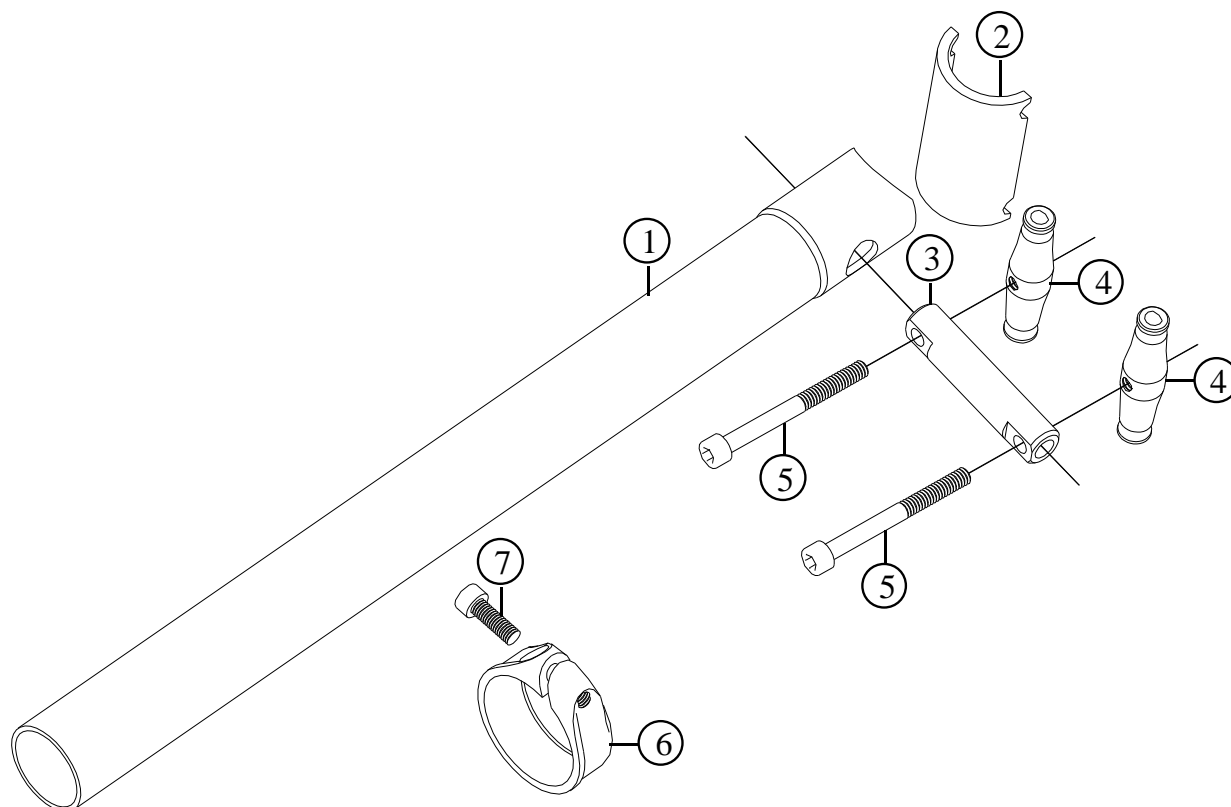
ST-M10 Ti. 31,6 x 350

ST-M10 XL Ti. 30,9 x 400

ST-M10 XL Ti. 31,6 x 400



2012



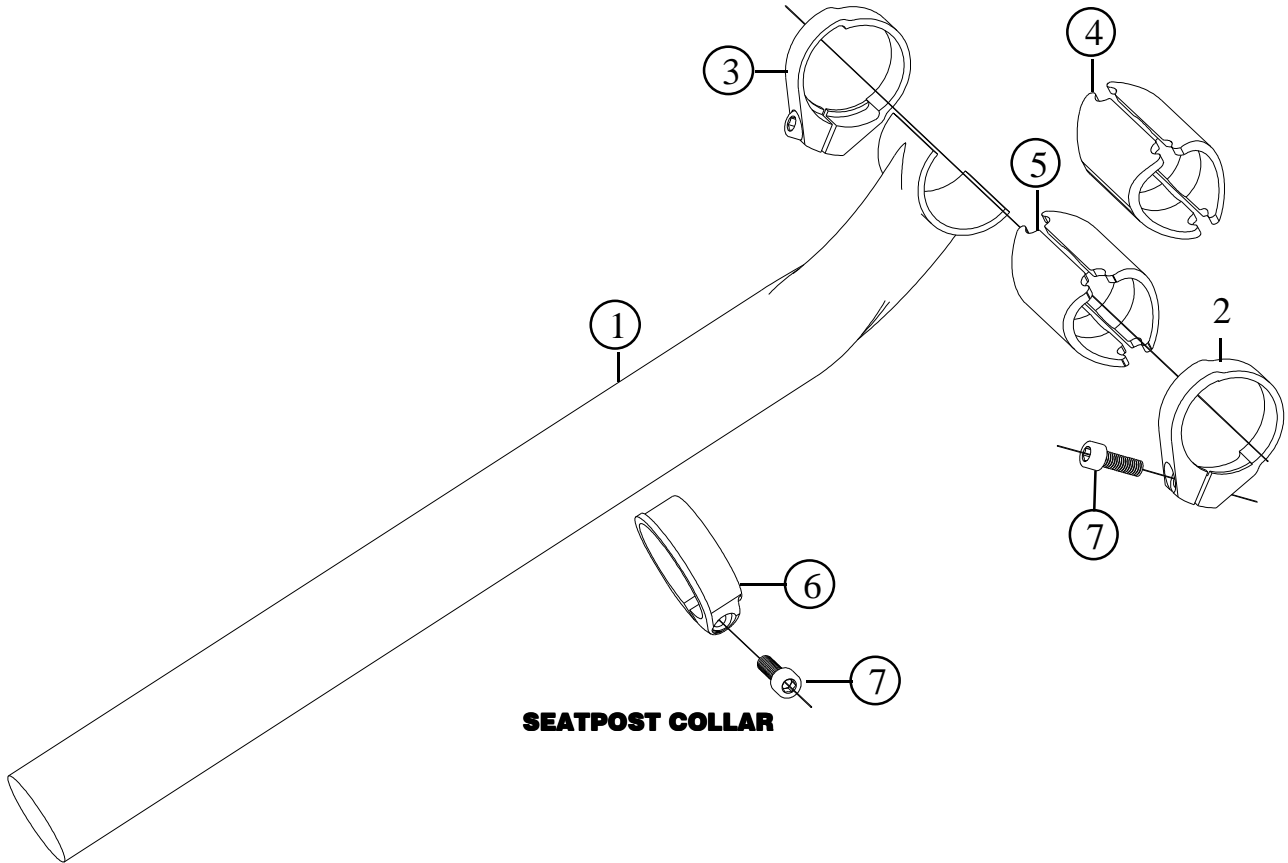
| Item no. | Code | DESCRIPTION | Price € |
|----------|-----------|--|--------------|
| 1 | STM101B | Light Alloy Post 27,2 x 350mm | 56,0 |
| 1 | STM101C | Light Alloy Post 30,9 x 350mm . Externally double butted | 56,0 |
| 1 | STM101D | Light Alloy Post 31,6 x 350mm . Externally double butted | 56,0 |
| 1 | STM101C4 | Light Alloy Post 30,9 x 400mm . Externally double butted | 64,0 |
| 1 | STM101D4 | Light Alloy Post 31,6 x 400mm . Externally double butted | 64,0 |
| 2 | STM102RD | Rails Cradle. Light Alloy. Red anodised | 8,0 |
| 2 | STM102TT | Rails Cradle. Light Alloy. Titan anodised | 8,0 |
| 2 | STM102BE | Rails Cradle. Light Alloy. Blue anodised | 8,0 |
| 2 | STM102BLK | Rails Cradle. Light Alloy. Black anodised | 8,0 |
| 2 | STM102OR | Rails Cradle. Light Alloy. Orange anodised | 8,0 |
| 3 | STM103T | Pin for Titanium bolts. Black anodised | 7,0 |
| 4 | STM104T | Rail Clamp for M6 Titanium Bolts | 2pcs 7,0 pc |
| 5 | TCC558T | Allen Bolt M6 x 50mm in Titanium – Gold Plated. Special design | 2pcs 10,6 pc |
| 6 | STAC35 | SC35 Seat Clamp. 34,9mm dia Black, Titan, Red, Blue, Orange anodised. Without Bolt | 11,0 |
| 6 | STAC32 | SC32 Seat Clamp. 31,6mm dia Black, Titan, Red, Blue, Orange anodised. Without Bolt | 11,0 |
| 7 | TCC515T | Allen Bolt M5 x 15 / Titanium – Gold Plated | 6,3 |
| | | | |
| | | | |
| | | | |
| | | | |

Note: modified from Spare Part Manual dated 2011

Specifications are subject to change without notice

Seatpost for Road & MTB
ST-R Black Hole
ST-M Black Hole

2012

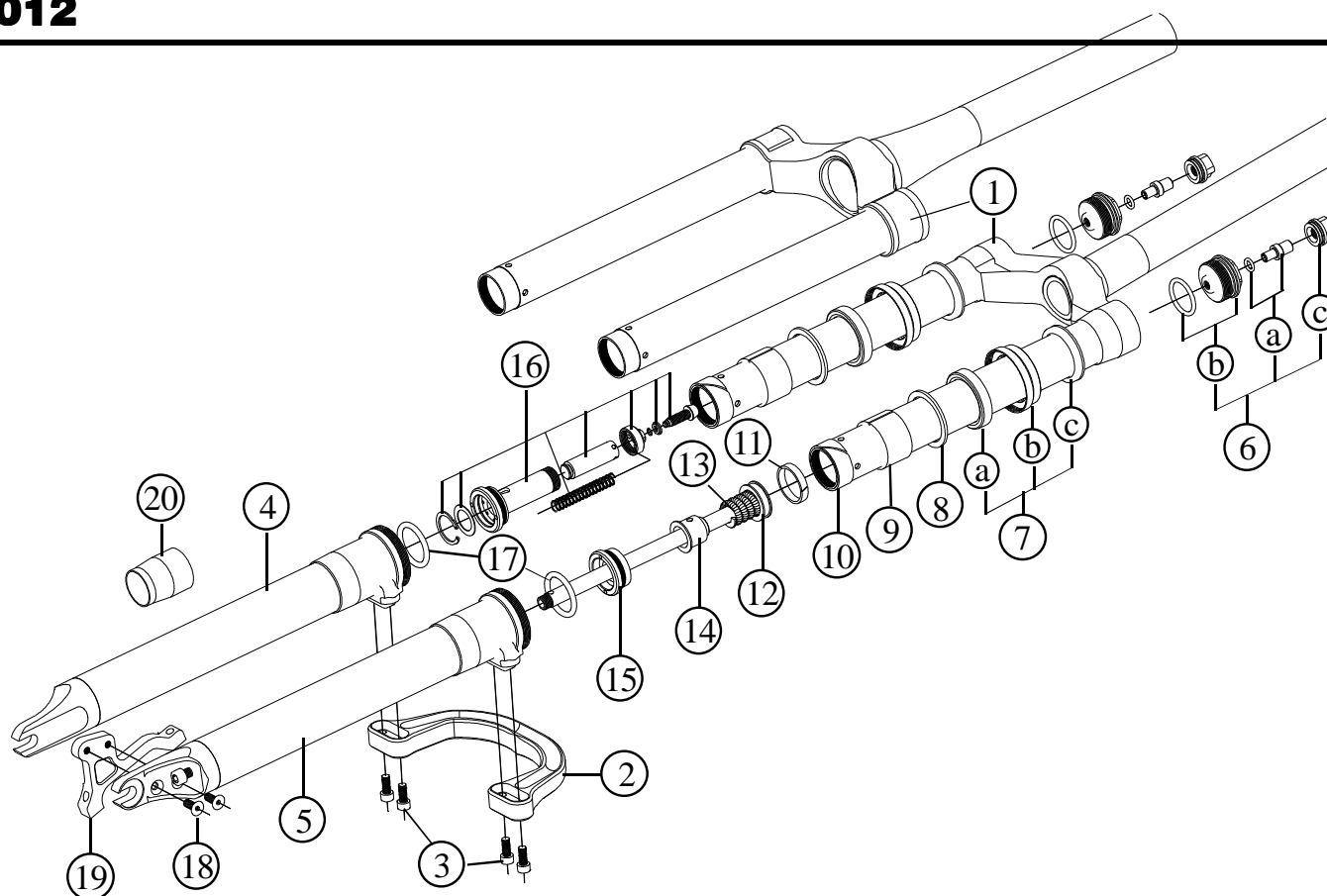


SEATPOST COLLAR

| Item no. | Code | DESCRIPTION | Price € |
|----------|---------|--|---------|
| 1 | STMRH | Seatpost 31,6 x 250mm. Carbon Fibre | 260,0 |
| 1 | STMBH | Seatpost 31,6 x 350mm. Carbon fibre | 260,0 |
| 2 | STBHCR | Right Hand Clamp. Black anodised | 12,0 |
| 3 | STBHCL | Left Hand Clamp. Black anodised | 12,0 |
| 4 | STBHRS | Craddle for regular railed saddles. Asymmetric. Titan anodised (2pcs) | 14,0 |
| 5 | STBHBHS | Craddle specific for FRM Black Hole Saddle. Black anodised (2pcs) | 14,0 |
| 6 | STAC35 | SC35 Seat Clamp. 34,9mm dia Black, Titan, Red, Blue, Orange anodised. Without Bolt | 11,0 |
| 6 | STAC32 | SC32 Seat Clamp. 31,6mm dia Black, Titan, Red, Blue, Orange anodised. Without Bolt | 11,0 |
| 7 | TCC515T | Allen Bolt M5 x 15 / Titanium – Gold Plated | 6,3 |
| | | | |
| | | | |

MTB Suspension Fork
AIR-WAY SUPER RACE 26" (NEW)
AIR-WAY XC TEAM 26" (NEW)

2012



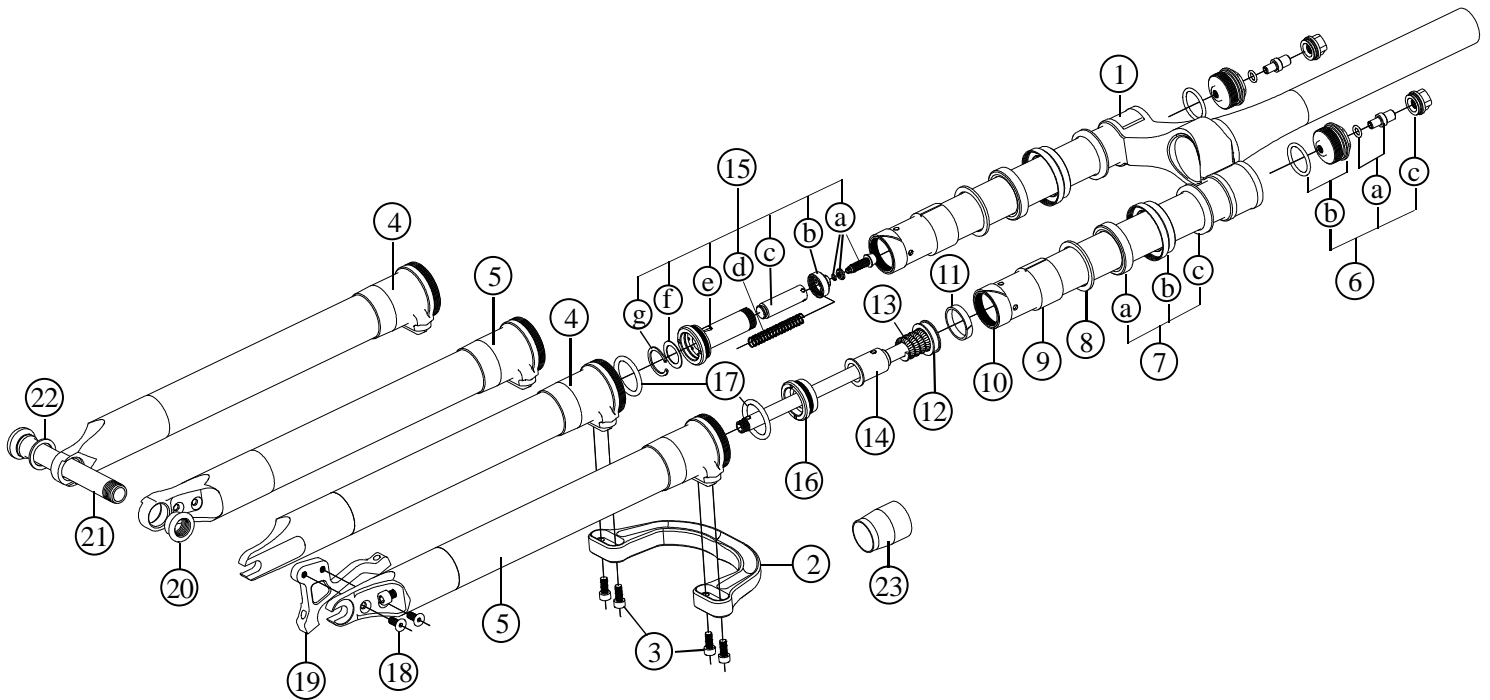
| Item no. | Code | DESCRIPTION | Price € |
|-------------|-----------|---|----------------|
| 1 | 06CE30L | 1 1/8" Crown Assembly. Carbon Fibre Steerer Tube | 375,0 |
| 1 | 06CE30L15 | 1,5" Crown Assembly. Light Alloy Steerer Tube | 325,0 |
| 1c | AW95USR | Upper stanchion for replacement (Fork must be sent back to FRM for stanchion replacement) | 65,0 |
| 2 | 03RBEVO | Reversed Brace. Light Alloy. Red anodised | 72,0 |
| 3 | TCC512Ti | Brace Fixing Bolt. Allen M5 x12mm . Titanium, Gold Plated | 4pcs 6,1 pc |
| 4 | 01RBC3026 | Right Lower Leg. Carbon Fibre | 160,0 |
| 5 | 02RBC3026 | Left Lower Leg . Carbon Fibre | 185,0 |
| 6a | 21D | Air Valve & O-Ring 2025 (I.D. 6,07 x 1,78mm) | 6,0 |
| 6b | 21B30 | Air Valve Body & O-Ring 128 (I.D. 20,63 x 1,78mm) | 6,0 |
| 6c | 21C | Air Valve Cap & O-Ring 2050 (I.D. 12,42 x 1,78mm) | 3,0 |
| 7b | 1730 | Oil Seal Lock Ring / Light Alloy | 2pcs 6,0 pc |
| 7a | 16N | Oil Seal 30 x 40 x 7mm | 2pcs 3,0 pc |
| 7c | SA30 | Dust Seal | 2pcs 4,0 pc |
| 8 | 15N | Shim / Light Alloy 37,5 x 30 x 2mm | 2pcs 1,5 pc |
| 9 | 14N | Upper Bushing. Iglodur W300 34 x 30 x 20mm | 2pcs 7,0 pc |
| 10 | 13N | Lower Bushing. Polyzene 31,75 x 29,1 x 12mm | 2pcs 7,0 pc |
| 11 | 11SP | Piston Seal FG 15049 4,9 x 1,5mm | 0,5 |
| 12 | 08SP151 | Piston/Shaft / Spring Assembly. 151mm long shaft. Light Alloy | 17,0 |
| 13 | 09SP | Negative – Top-Out Spring (Dia. 18,4mm. Length 25mm) | 2,0 |
| 14 | 09SPS19 | Spring Spacer (19mm long) for 95mm travel. 110mm travel without spacer | 3,0 |
| 15 | 07SP | Oil Valve Assembly | 8,0 |
| Not Visible | 18 | Damping Adjustment Piston & O-Ring 2012 (I.D.) 2,90 x 1,78mm) | 2,0 |
| 16 | SSVALVE | SSV Valve Assembly | 17,0 |
| 17 | 10A | Bottom-Out Damper. O-Ring | 2pcs 0,5 pc |
| 19 | AW1 | Post-Mount AW1 Disc Brake Mount for 160mm rotors. Light Alloy | 19,0 |
| 20 | OST30 | Oil Seal Tool for 30 mm stanchions | 4,5 |
| | | Motul Fork Oil Factory Line – Light 5W 200 cc | 12,0 |
| | | Motul Fork Oil Factory Line – Light 5W 1.000 cc | 26,0 |

Specifications are subject to change without notice

MTB Suspension Fork
AIR-WAY SUPER RACE 29er (NEW)
AIR-WAY XC TEAM 29er (NEW)



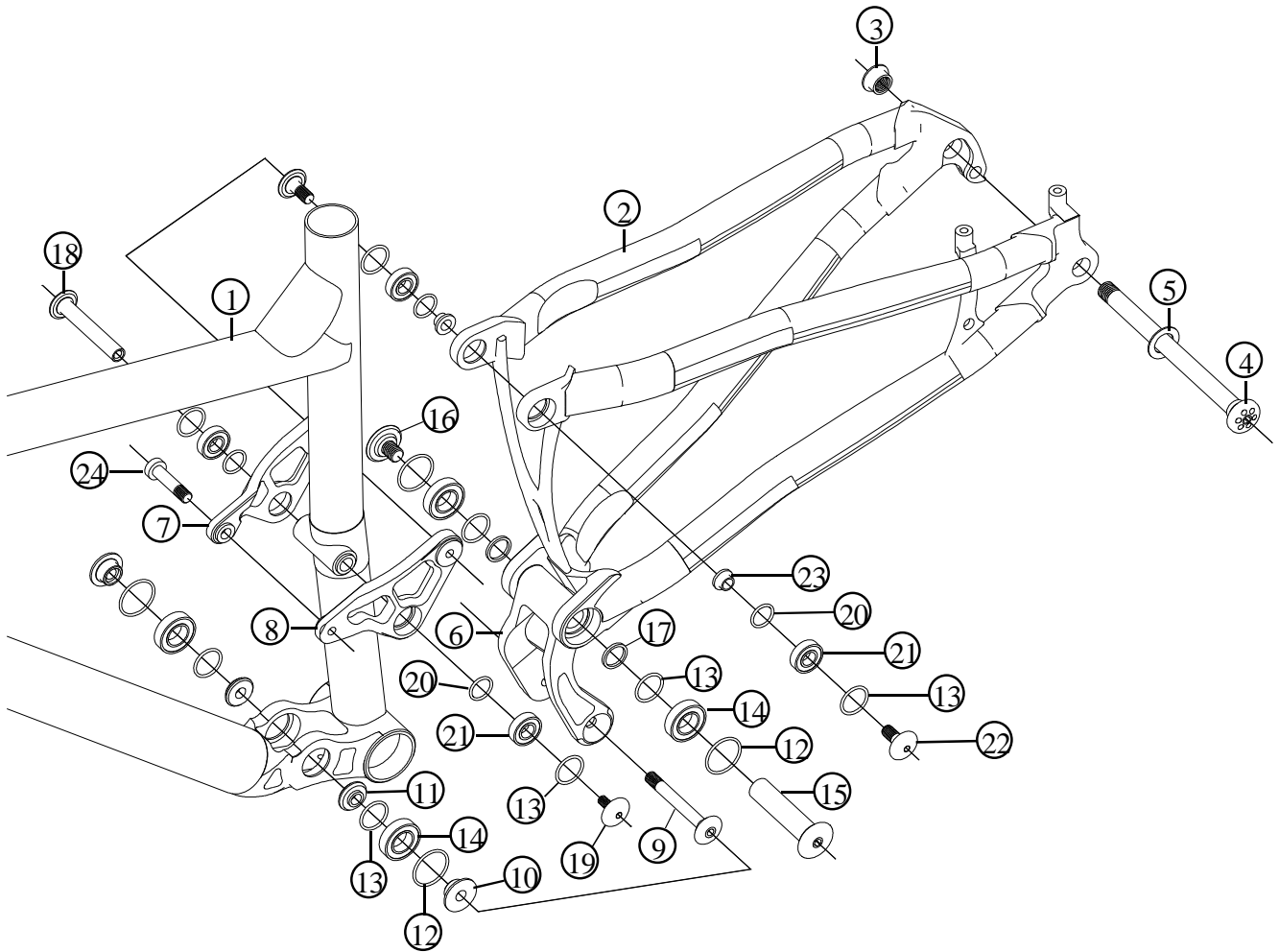
2012



| Item no. | Code | DESCRIPTION | Price € |
|-------------|------------|---|----------------|
| 1 | 06CE30L15 | 1,5" Crown Assembly. Light Alloy Steerer Tube | 325,0 |
| 1c | AW95USR | Upper stanchion for replacement (Fork must be sent back to FRM for stanchion replacement) | 65,0 |
| 2 | 03RBEVO | Reversed Brace. Light Alloy. Red anodised | 72,0 |
| 3 | TCC512Ti | Brace Fixing Bolt. Allen M5 x12mm . Titanium, Gold Plated | 4pcs 6,1 pc |
| 4 | 01RBC3029S | Right Lower Leg. Slotted Dropouts. Carbon Fibre | 160,0 |
| 5 | 02RBC329S | Left Lower Leg . Slotted Dropouts. Carbon Fibre | 185,0 |
| 4 | 01RBC3029Q | Right Lower Leg. QR15 Dropouts. Carbon Fibre | 160,0 |
| 5 | 02RBC329Q | Left Lower Leg . QR15 Dropouts. Carbon Fibre | 185,0 |
| 6a | 21D | Air Valve & O-Ring 2025 (I.D. 6,07 x 1,78mm) | 6,0 |
| 6b | 21B30 | Air Valve Body & O-Ring 128 (I.D. 20,63 x 1,78mm) | 6,0 |
| 6c | 21C | Air Valve Cap & O-Ring 2050 (I.D. 12,42 x 1,78mm) | 3,0 |
| 7b | 1730 | Oil Seal Lock Ring / Light Alloy | 2pcs 6,0 pc |
| 7a | 16N | Oil Seal 30 x 40 x 7mm | 2pcs 3,0 pc |
| 7c | SA30 | Dust Seal | 2pcs 4,0 pc |
| 8 | 15N | Shim / Light Alloy 37,5 x 30 x 2mm | 2pcs 1,5 pc |
| 9 | 14N | Upper Bushing. Igloodur W300 34 x 30 x 20mm | 2pcs 7,0 pc |
| 10 | 13N | Lower Bushing. Polyzene 31,75 x 29,1 x 12mm | 2pcs 7,0 pc |
| 11 | 11SP | Piston Seal FG 15049 4,9 x 1,5mm | 0,5 |
| 12 | 08SP151 | Piston/Shaft / Spring Assembly. 151mm long shaft. Light Alloy | 17,0 |
| 13 | 09SP | Negative - Top-Out Spring (Dia. 18,4mm. Length 25mm) | 2,0 |
| 14 | 09SPS30 | Spring Spacer (30mm long) for 85mm travel. 100mm travel with 14mm long spacer | 3,0 |
| 15 | SSVALVE | SSV Valve Assembly | 17,0 |
| 16 | 07SP | Oil Valve Assembly | 8,0 |
| Not Visible | 18 | Damping Adjustment Piston & O-Ring2012 (I.D.) 2,90 x 1,78mm) | 2,0 |
| 17 | 10A | Bottom-Out Damper. O-Ring | 2pcs 0,5 pc |
| 19 | AW1 | Post-Mount AW1 Disc Brake Mount for 160mm rotors. Light Alloy | 19,0 |
| 20 | QR15AXN | QR15 Axle Nut (Hard Anodised) | 5,0 |
| 21 | QR15AX | QR15 Axle (Hard Anodised) | 37,0 |
| 22 | QR15AXW | QR15 Washer (Delrin) | 1,0 |
| 23 | OST30 | Oil Seal Tool for 30 mm stanchions | 4,5 |
| | | Motul Fork Oil Factory Line – Light 5W 200 cc | 12,0 |
| | | Motul Fork Oil Factory Line – Light 5W 1.000 cc | 26,0 |

Specifications are subject to change without notice

2012



| Item no. | Code | DESCRIPTION | Price € |
|----------|--------|--|-----------|
| 1 | 8HPFF | Main Frame. White Painted with FRM stickers (Small – Medium – Large) | 900,0 |
| 2 | 8HPFRS | Rear Suspension Assembly. White Painted | 770,0 |
| 3 | | Replaceable Nut of E-Thru Axle. M12x1,5. Hard Anodised | 5,0 |
| 4 | | E-Thru Axle. M12x1,5. Hard Anodised. Compatible with 8HP Full Frame Only | 42,0 |
| 5 | | Washer of E-Thru Axle. Plastic | 1,0 |
| 6 | | Lower Yoke. Black Anodised | 70,0 |
| 7 | | Right Side Rocker Arm. Black Anodised | 55,0 |
| 8 | | Left Side Rocker Arm. Black Anodised | 55,0 |
| 9 | | Front Axle of Lower Yoke. M10. Hard Anodised | 15,0 |
| 10-11 | | Bearing Plugs. Light Alloy. (Set of 2 pcs) | 2,0 set |
| 12 | | O-Ring 2100 (inner dia. 25mm. 1,78mm thick) | 0,2 pc |
| 13 | | O-Ring 2075 (inner dia. 18,8mm. 1,78mm thick) | 0,2 pc |
| 14 | | Enduro Bearing 15x28x7mm MAX. Bull Ball. High Load Capacity | 4 7,0 pc |
| 15 | | Rear Axle of Lower Yoke. Dia. 15mm. Hard Anodised | 20,0 |
| 16 | | Axle Bolt of Lower Yoke. M10. Hard Anodised | 5,0 |
| 17 | | Bearing spacer 15,1 x 18,6 x 2,0mm. Light Alloy | 0,5 pc |
| 18 | | Axle of Rocker Arms. Dia 10mm. Hard Anodised | 15,0 |
| 19 | | Axle Bolt of Rocker Arms. M6. Hard Anodised | 5,0 |
| 20 | | O-Ring 2056 (inner dia. 14mm. 1,78mm thick) | 0,2 pc |
| 21 | | Enduro Bearing 10x22x6mm MAX. Full Ball. High Load Capacity | 4 5,80 pc |
| 22 | | Bolt of Upper Suspension Link. M8. Hard Anodised | 5,0 pc |
| 23 | | Bearing spacer/sleeve. Light Alloy | 1,0 pc |
| 24 | | Bolt M8x35 of Shock Upper Eye. Light Alloy | 5,0 |

Specifications are subject to change without notice



**Via Mattei 18/a
48025 Riolo Terme (RA)
Italy**

tel. +39 0546 70310

fax +39 0546 74623

e-mail: info@frmbike.com

Ordini Italia: barbara@frmbike.biz

Foreign orders: jane@frmbike.biz

www.frmbike.biz